

VORTAC CQY <b>114.8</b> Chan <b>95</b>	APP CRS <b>285°</b>	Rwy Idg TDZE Apt Elev <b>N/A</b> <b>N/A</b> <b>500</b>
--	------------------------	--

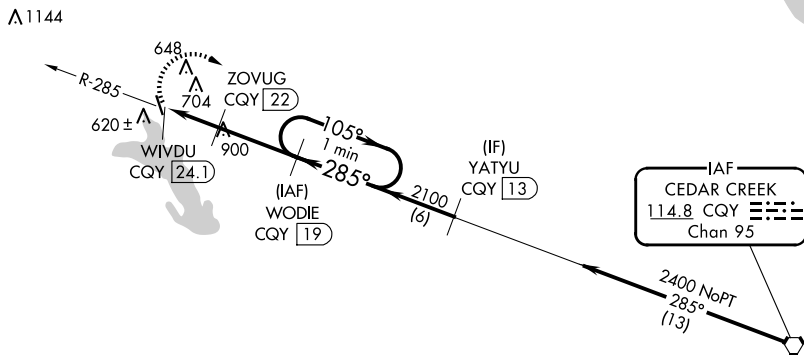
# VOR/DME-A

ENNIS MUNI (F41)

**NA** When local altimeter setting not received, use Midlothian/Waxahachie altimeter setting and increase all MDAs 40 feet and visibility Cat C ¼ SM.

**MISSED APPROACH:** Climbing right turn to 2400 on CQY R-285 to WODIE/19 DME and hold.

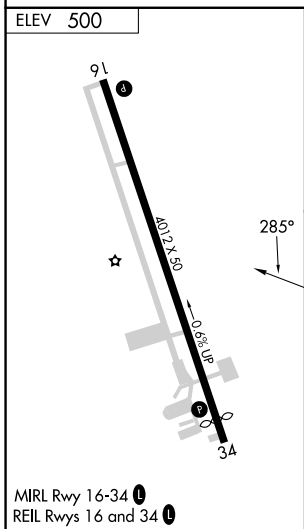
LNC AWOS-3PT <b>118.975</b>	LONE STAR APP CON <b>125.2 343.65</b>	CTAF <b>122.9</b>
--------------------------------	--	----------------------



Procedure NA for arrival at CQY VORTAC airway radials 234 CW 263.

SC-2, 20 FEB 2025 to 20 MAR 2025

SC-2, 20 FEB 2025 to 20 MAR 2025



ENNIS, TEXAS  
Amdt 1B 16JUN22

32°20'N-96°40'W

# ENNIS MUNI (F41)

## VOR/DME-A

	One Minute Holding Pattern			
	2400 CQY R-285 WODIE CQY 19	WODIE CQY 19	ZOVUG CQY 22 WIVDU CQY 24.1	2100 1420
CATEGORY	A	B	C	D
CIRCLING	1200-1 700 (700-1)	1200-1¼ 700 (700-1¼)	1300-2¼ 800 (800-2¼)	NA