

VOR/DME HPB	APP CRS	Rwy Idg	3300
115.2	313°	TDZE	20
Chan 99		Apt Elev	20

VOR RWY 32

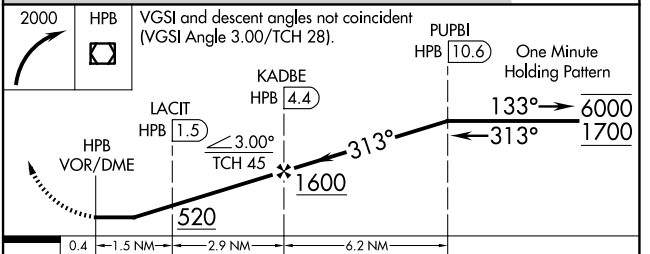
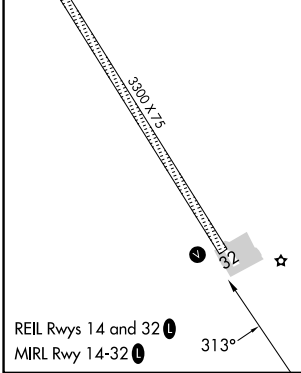
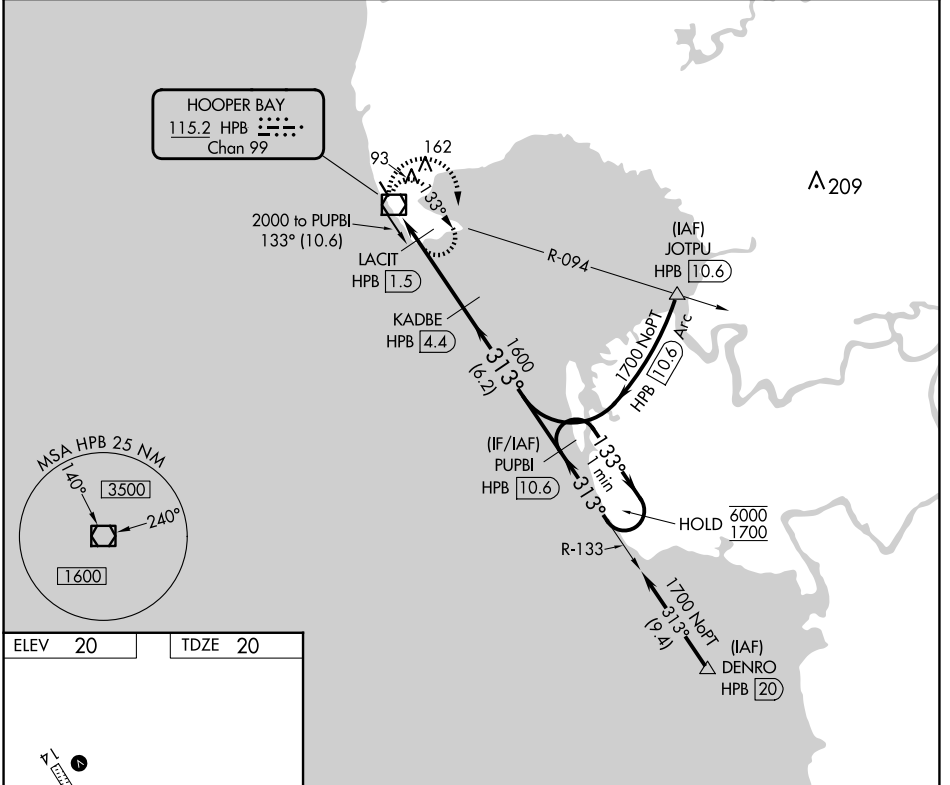
HOOPER BAY (HPB) (PAHP)

DME required.

⚠ Rwy 32 helicopter visibility reduction below 1 SM NA.
⚠ Straight-in Rwy 32 NA at night, Circling Rwy 32 NA at night.

MISSED APPROACH: Climbing right turn to 2000 in HPB VOR/DME holding pattern.

AWOS-3P 135.1	ANCHORAGE CENTER 124.5	KENAI RADIO 122.4	CTAF 123.0
-------------------------	----------------------------------	-----------------------------	----------------------



CATEGORY	A	B	C	D
S-32	420-1	400 (400-1)	420-1 $\frac{1}{8}$	400 (400-1 $\frac{1}{8}$)
C CIRCLING	420-1	480-1	480-1 $\frac{1}{2}$	580-2
	400 (400-1)	460 (500-1)	460 (500-1 $\frac{1}{2}$)	560 (600-2)

AK, 20 FEB 2025 to 17 APR 2025

AK, 20 FEB 2025 to 17 APR 2025