

APP CRS	Rwy Idg	3301
240°	TDZE	1213
	Apt Elev	1215

RNAV (GPS) RWY 24

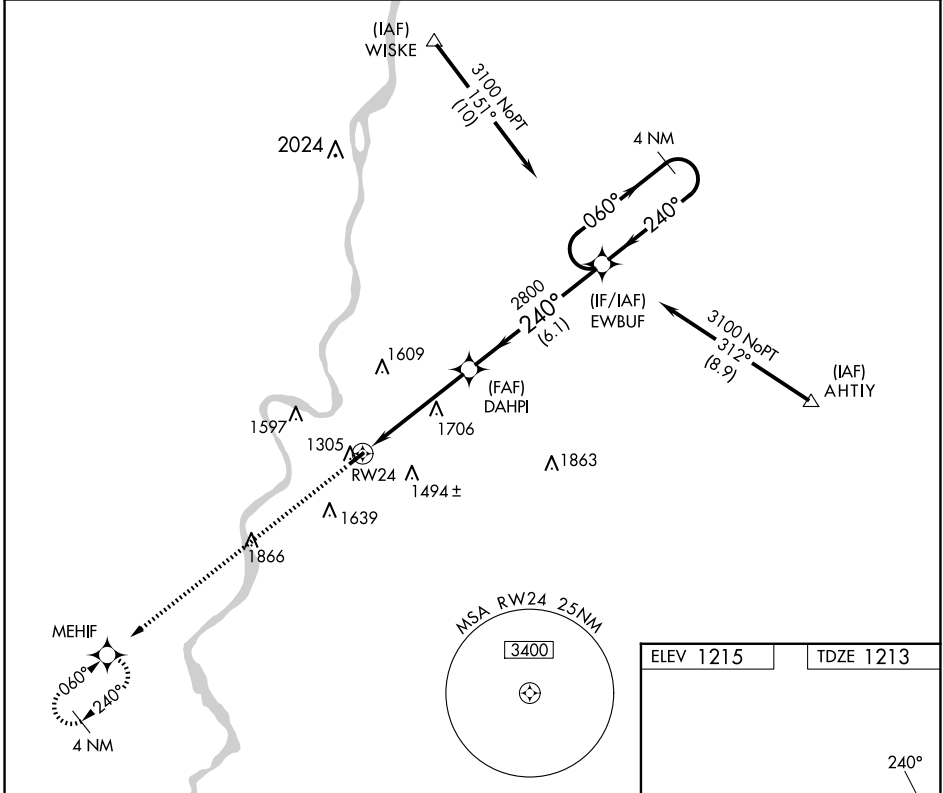
MARSHALL COUNTY (MPG)

RNP APCH.

When local altimeter setting not received, use Wheeling altimeter setting and increase all MDA 60 feet. Rwy 24 helicopter visibility reduction below $\frac{3}{4}$ SM NA.

MISSED APPROACH: Climb to 3000 direct MEHIF and hold.

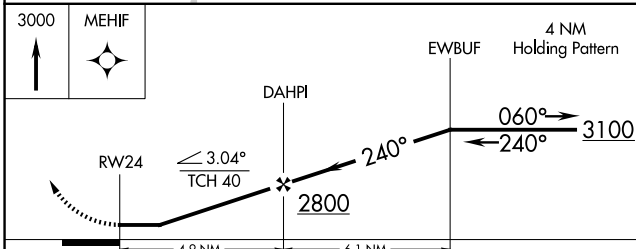
AWOS-3 119.05	CLEVELAND CENTER 126.95 239.30	UNICOM 122.7 (CTAF) 0
-------------------------	--	---------------------------------



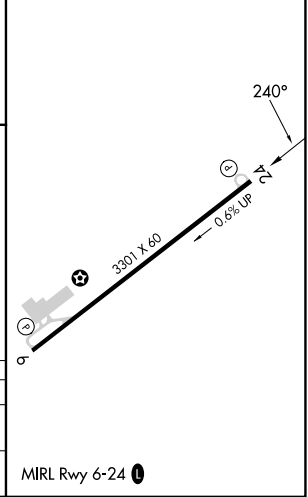
NE-4, 20 FEB 2025 to 20 MAR 2025

NE-4, 20 FEB 2025 to 20 MAR 2025

ELEV 1215	TDZE 1213
-----------	-----------



CATEGORY	A	B	C	D
LNVA MDA	1960-1 747 (800-1)	1960-1½ 747 (800-1½)	1960-2¼ 747 (800-2¼)	NA
CIRCLING	1960-1 745 (800-1)	1960-1½ 745 (800-1½)	1960-2¼ 745 (800-2¼)	NA



MIRL Rwy 6-24 0