

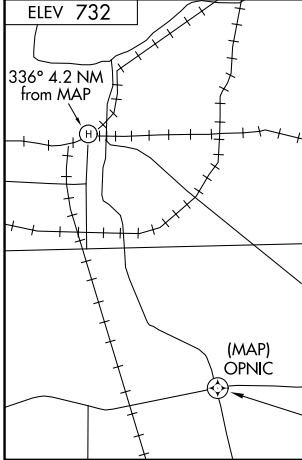
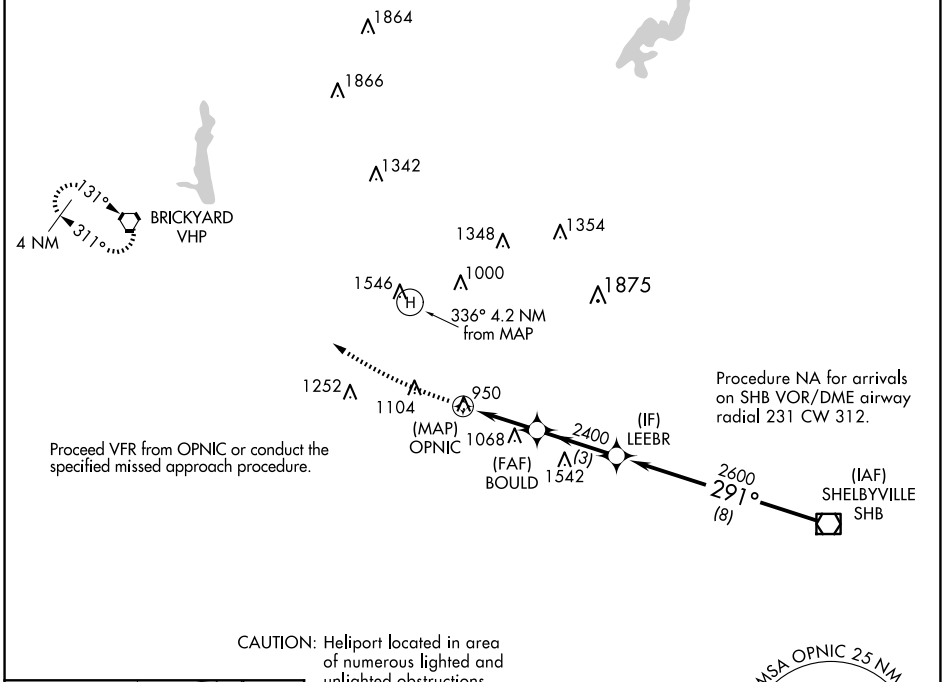
APP CRS <b>291°</b>	Rwy Idg Surf Elev Apt Elev	<b>N/A</b> <b>824</b> <b>732</b>
------------------------	----------------------------------	--

# COPTER RNAV (GPS) 291°

INDIANAPOLIS DOWNTOWN (8A4)

RNP APCH - GPS	<p><b>NA</b> Limit final and missed approach to 70 KIAS. When local altimeter setting not received, use Indianapolis Intl altimeter setting and increase MDA 40 feet. Activate High Intensity Pad Lights-CTAF.</p>	<p><b>MISSED APPROACH:</b> Climb to 1500 then climbing right turn to 3000 direct VHP VORTAC and hold.</p>
----------------	--	---

AWOS-3 <b>135.525</b>	INDIANAPOLIS APP CON <b>125.275 317.8</b>	UNICOM <b>123.05 (CTAF) 0</b>
--------------------------	--	----------------------------------



1500	3000	VHP	LEEBR	SHB VOR/DME
<p>Proceed VFR from MAP</p>		BOULD	291°	2600
		OPNIC	2600	
		2.8 NM	3 NM	8 NM
CATEGORY	COPTER			
LNAV MDA	1340-¾ 516 (600-¾)			

EC-2, 20 FEB 2025 to 20 MAR 2025

EC-2, 20 FEB 2025 to 20 MAR 2025