

VOR/DME SHB <b>116.15</b> Chan <b>108 (Y)</b>	APP CRS <b>287°</b>	Rwy Idg Surf Elev Apt Elev	<b>N/A</b> <b>824</b> <b>732</b>
-----------------------------------------------------	------------------------	----------------------------------	----------------------------------------

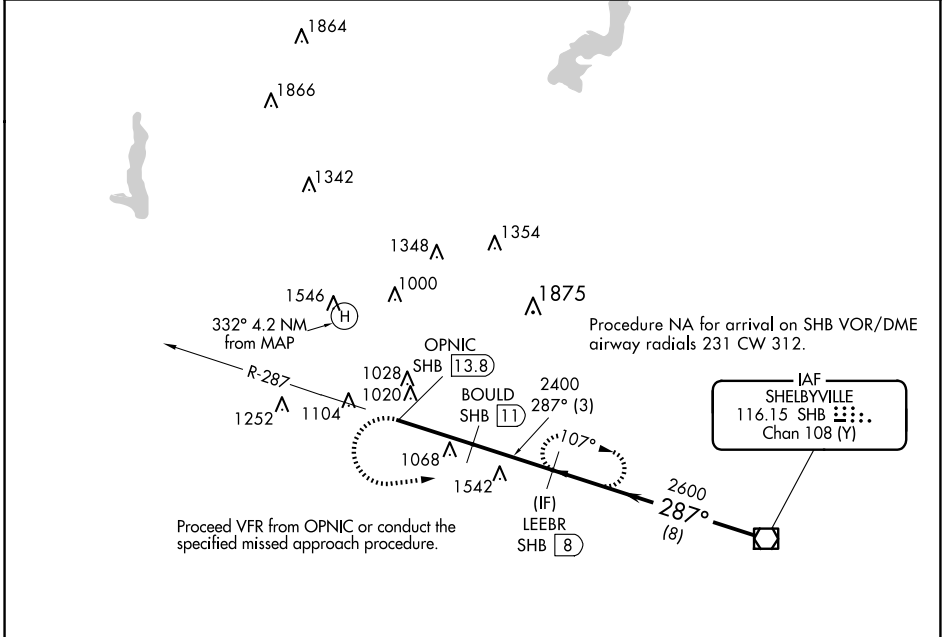
# COPTER VOR/DME 287°

INDIANAPOLIS DOWNTOWN (8A.4)

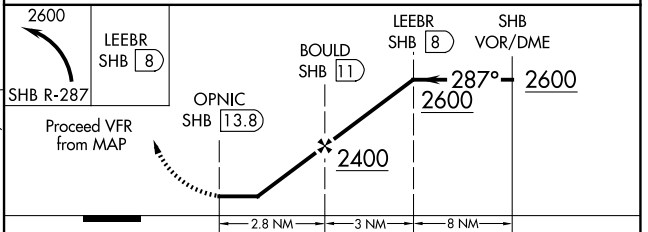
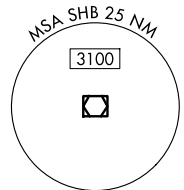
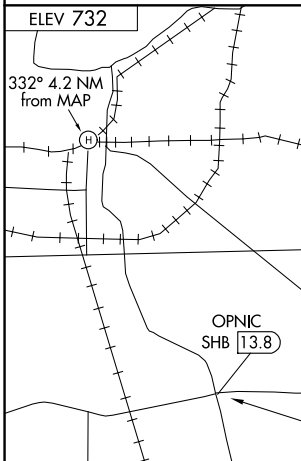
**▲ NA** When local altimeter setting not received, use Indianapolis Intl altimeter setting and increase MDA 40 feet. Activate High Intensity Pad Lights-CTAF.

**MISSED APPROACH:** Climbing left turn to 2600 via SHB R-287 to LEEBR/SHB 8 DME and hold.

<b>AWOS-3</b> <b>135.525</b>	<b>INDIANAPOLIS APP CON</b> <b>125.275 317.8</b>	<b>UNICOM</b> <b>123.05 (CTAF) 0</b>
---------------------------------	-----------------------------------------------------	-----------------------------------------



**CAUTION:** Heliport located in area of numerous lighted and unlighted obstructions.



CATEGORY	COPTER
H-287°	1340- <sup>3</sup> / <sub>4</sub> 516 (600- <sup>3</sup> / <sub>4</sub> )

EC-2, 20 FEB 2025 to 20 MAR 2025

EC-2, 20 FEB 2025 to 20 MAR 2025