

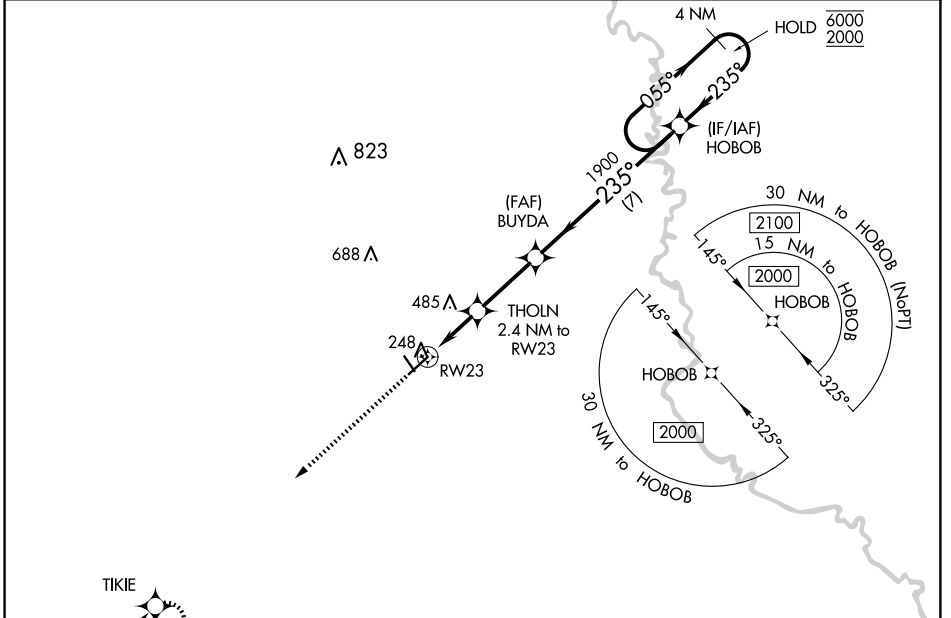
WAAS CH <b>93799</b> <b>W23A</b>	APP CRS <b>235°</b>	Rwy ldg TDZE <b>190</b> Apt Elev <b>190</b>
--	------------------------	---

# RNAV (GPS) RWY 23

PLANTATION AIRPARK (JYL)

RNP APCH.	MISSED APPROACH: Climb to 2500 direct TIKIE and hold.
<p>▼ Rwy 23 helicopter visibility reduction below 3/4 SM NA. For uncompensated Baro-VNAV systems, LNAV/VNAV NA below -1.5°C or above 54°C.</p>	

AWOS-3 <b>118.875</b>	JACKSONVILLE CENTER <b>132.925 363.2</b>	UNICOM <b>122.8 (CTAF)</b>
--------------------------	---	-------------------------------

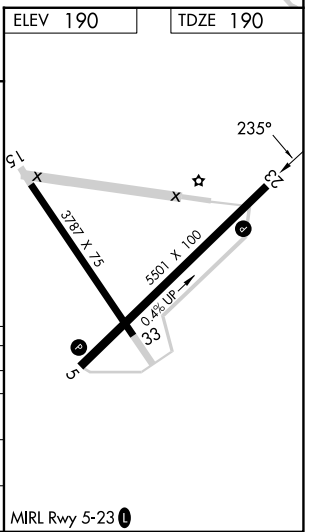
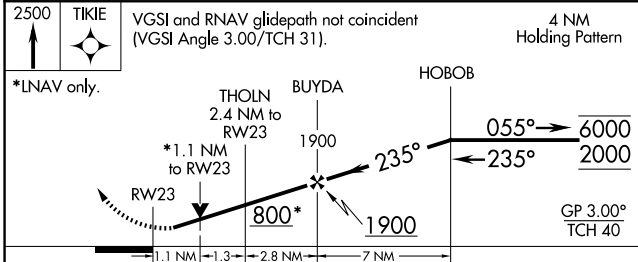


SE-4, 20 FEB 2025 to 20 MAR 2025

SE-4, 20 FEB 2025 to 20 MAR 2025



ELEV 190	TDZE 190
----------	----------



CATEGORY	A	B	C	D
LPV DA		494-7/8	304 (400-7/8)	
LNAV/VNAV DA		623-1 1/4	433 (500-1 1/4)	
LNAV MDA	700-1	510 (600-1)	700-1 3/8	510 (600-1 3/8)
CIRCLING	700-1	510 (600-1)	840-1 3/4 650 (700-1 3/4)	1040-2 3/4 850 (900-2 3/4)