

LOC I-LCK <b>110.1</b>	APP CRS <b>232°</b>	Rwy Idg	23L	23R
		TDZE	<b>740</b>	<b>743</b>
		Apt Elev	<b>744</b>	<b>744</b>

# ILS or LOC RWY 23L

RICKENBACKER INTL (LCK)

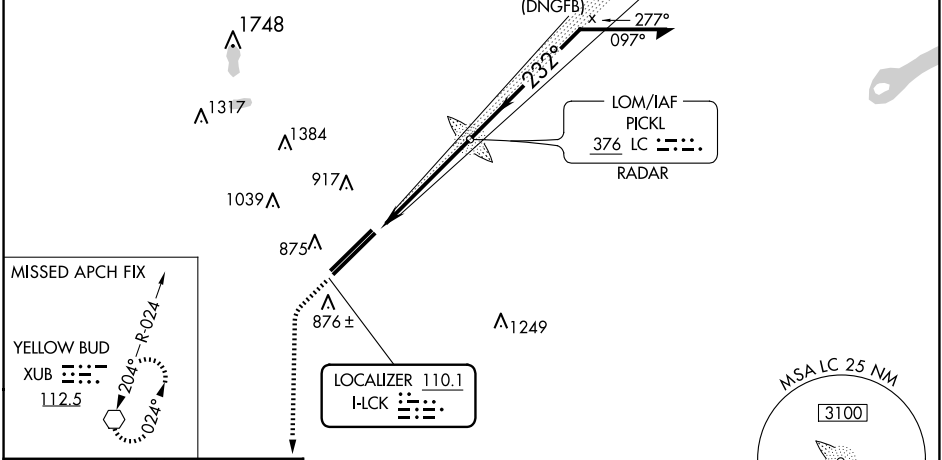
**⚠** Circling NA northwest of Rwy 5L-23R. When local altimeter setting not received, use John Glenn Columbus Intl altimeter setting: increase DA to 975 feet; increase all MDAs 40 feet and S-LOC 23L visibility Cats C/D to RVR 5500 and Circling visibility Cat D to 2 1/4 SM. Autopilot coupled approach NA below 1000 MSL.

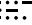
**MALSR**  
 MISSED APPROACH: Climb to 3000, then left turn direct XUB VOR and hold.

ATIS <b>132.75</b>	COLUMBUS APP CON <b>134.0 279.6</b>	RICK TOWER <b>120.05 348.4</b>	GND CON <b>125.275 275.8</b>	CLNC DEL <b>125.275 275.8</b>
-----------------------	--	-----------------------------------	---------------------------------	----------------------------------

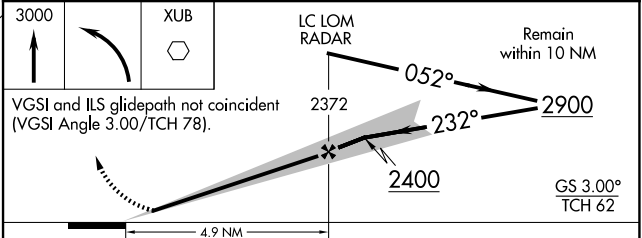
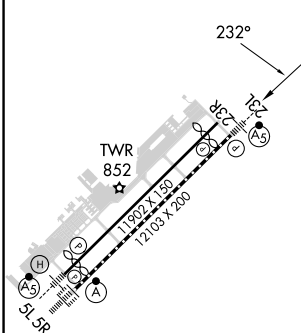
ALTERNATE MISSED APCH FIX  
  
**PICKL**  
 376 LC 

## RADAR REQUIRED



MISSED APCH FIX  
**YELLOW BUD**  
 XUB  **112.5**  
 R-024  
 20°  
 024°

ELEV 744	TDZE 23L 740	TDZE 23R 743
----------	--------------	--------------



TDZ/CL Rwy 5R	REIL Rwy 23R	HIRL Rwy 5L-23R and 5R-23L	FAF to MAP 4.9 NM		
Knots	60	90	120	150	180
Min:Sec	4:54	3:16	2:27	1:58	1:38
CATEGORY	A	B	C	D	
S-ILS 23L	940/24 200 (200-1/2)				
S-LOC 23L	1 220/24	480 (500-1/2)	1 220/50	480 (500-1)	
SIDESTEP RWY 23R	1 220-1	477 (500-1)	1 220-1 1/2	477 (500-2)	
CIRCLING	1 240-1	496 (500-1)	1 280-1 1/2	1 400-2	
			536 (600-1 1/2)	656 (700-2)	

EC-2, 20 FEB 2025 to 20 MAR 2025

EC-2, 20 FEB 2025 to 20 MAR 2025