

LOC/DME I-DDV <b>110.1</b> Chan <b>38</b>	APP CRS <b>052°</b>	Rwy Idg <b>12103</b> TDZE <b>736</b> Apt Elev <b>744</b>
---	------------------------	--

# ILS or LOC RWY 5R

RICKENBACKER INTL (LCK)

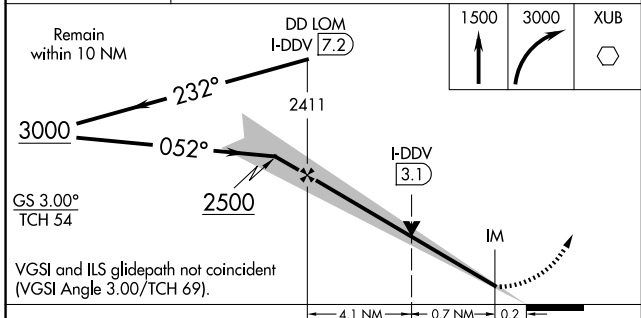
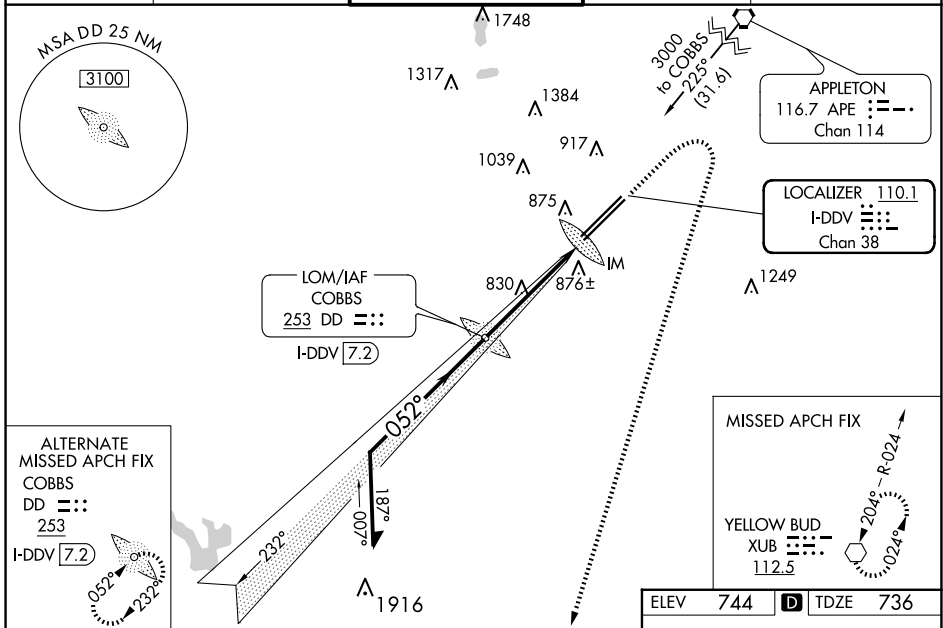
ADF or DME required.

**NA**  
Circling NA northwest of Rwy 5L-23R.

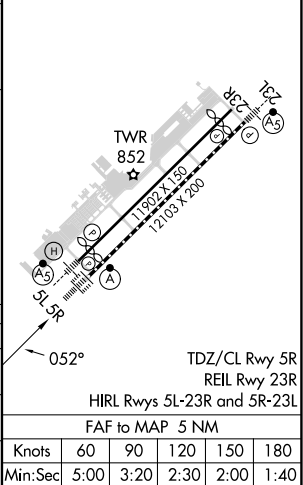
ALSF-2

MISSED APPROACH: Climb to 1500 then climbing right turn to 3000 direct XUB VOR and hold.

ATIS <b>132.75</b>	COLUMBUS APP CON <b>134.0 279.6</b>	<b>RICK TOWER</b> <b>120.05 348.4</b>	GND CON <b>125.275 275.8</b>	CLNC DEL <b>125.275 275.8</b>
-----------------------	--	--	---------------------------------	----------------------------------



ELEV 744	<b>D</b> TDZE 736
----------	-------------------



CATEGORY	A	B	C	D
S-ILS 5R	936/18		200 (200-½)	
S-LOC 5R	1080/24	344 (400-½)	1080/30	344 (400-¾)
CIRCLING	1240-1	496 (500-1)	1280-1½ 536 (600-1½)	1400-2 656 (700-2)

Knots	60	90	120	150	180
Min:Sec	5:00	3:20	2:30	2:00	1:40

EC-2, 20 FEB 2025 to 20 MAR 2025

EC-2, 20 FEB 2025 to 20 MAR 2025