

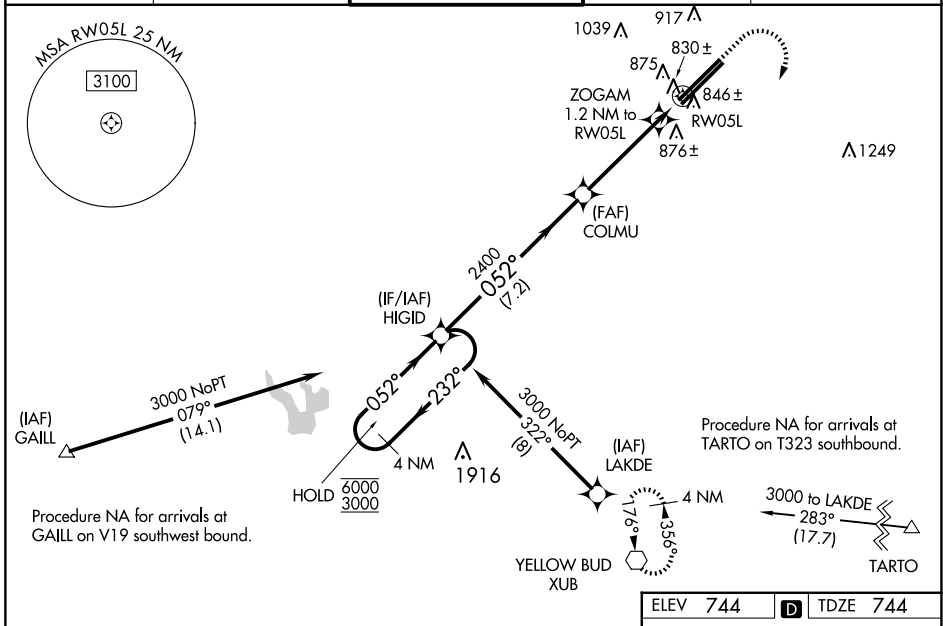
WAAS CH 78022 W05B	APP CRS 052°	Rwy Idg 11004 TDZE 744 Apt Elev 744
--	------------------------	--

RNAV (GPS) RWY 5L

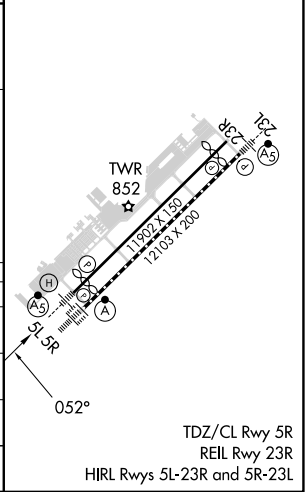
RICKENBACKER INTL (LCK)

RNP APCH - GPS.	MALSR 	MISSED APPROACH: Climb to 1500 then climbing right turn to 3000 direct XUB VOR and hold.
-----------------	-----------	---

ATIS 132.75	COLUMBUS APP CON 134.0 279.6	RICK TOWER 120.05 348.4	GND CON 125.275 275.8	CLNC DEL 125.275 275.8
-----------------------	--	-----------------------------------	---------------------------------	----------------------------------



4 NM Holding Pattern		VGSi and RNAV glidepath not coincident (VGSi Angle 3.00/TCH 70).		1500	3000	XUB
6000 ← 232°	3000 → 052°	HIGID	COLUM 2400	ZOGAM 1.2 NM to RW05L	RW05L	
GP 3.00° TCH 55		052°	2400	1200		
7.2 NM		3.8 NM		1.2 NM		
CATEGORY	A	B	C	D		
LPV DA		944-1/2	200 (200-1/2)			
RNAV/VNAV DA		1007-1/2	263 (300-1/2)			
RNAV MDA	1100-1/2	356 (400-1/2)	1100-5/8	356 (400-5/8)		
CIRCLING	1240-1	496 (500-1)	1280-1/2	1400-2		
			536 (600-1/2)	656 (700-2)		



EC-2, 20 FEB 2025 to 20 MAR 2025

EC-2, 20 FEB 2025 to 20 MAR 2025