

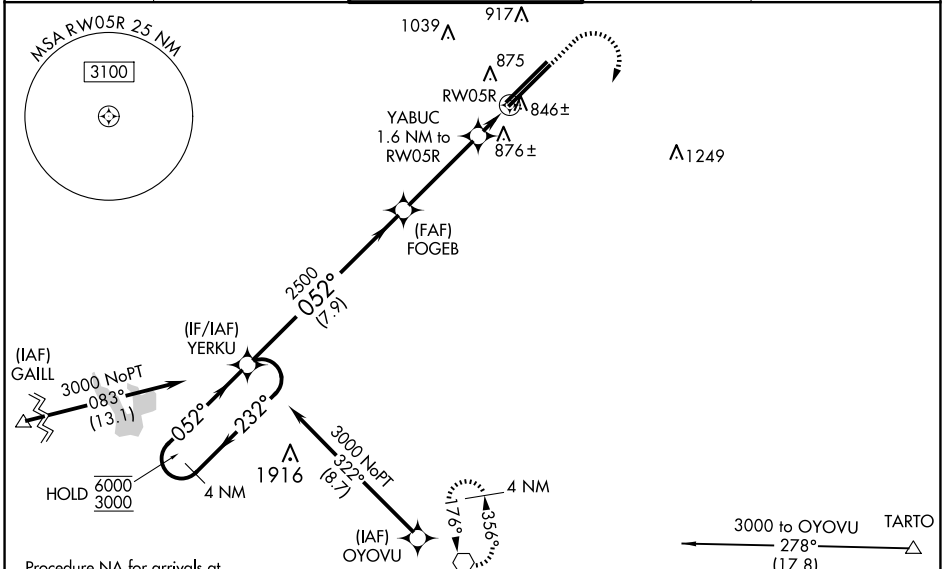
WAAS CH <b>78410</b>	APP CRS <b>052°</b>	Rwy Idg <b>12103</b>
<b>W05A</b>		TDZE <b>736</b>
		Apt Elev <b>744</b>

# RNAV (GPS) RWY 5R

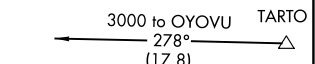
RICKENBACKER INTL (LCK)

RNP APCH - GPS		ALSF-2 	MISSED APPROACH: Climb to 1500 then climbing right turn to 3000 direct XUB VOR and hold.
⚠ Circling NA northwest of Rwy 5L-23R. For uncompensated Baro-VNAV systems, LNAV/VNAV NA below -16°C or above 54°C. Baro-VNAV and VDP NA when using John Glenn Columbus Intl altimeter setting. When local altimeter setting not received, use John Glenn Columbus Intl altimeter setting: increase LPV DA to 971 feet; increase LNAV/VNAV DA to 1138 feet and visibility to RVR 4000 all Cats; increase all MDAs 40 feet and LNAV Cats C/D visibility to RVR 4000 and Circling Cat D visibility to 2 1/4 SM. For inop ALS when using John Glenn Columbus Intl altimeter setting, increase LNAV/VNAV visibility to RVR 6000, all Cats.			

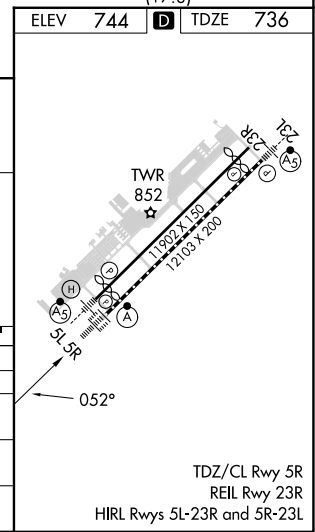
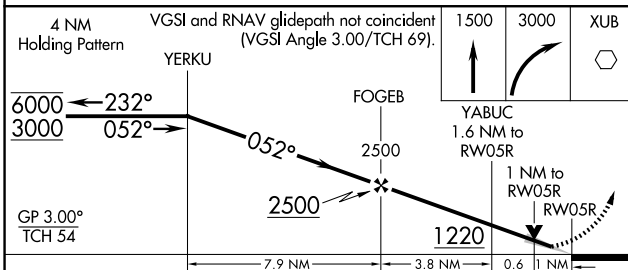
ATIS <b>132.75</b>	COLUMBUS APP CON <b>134.0 279.6</b>	RICK TOWER <b>120.05 348.4</b>	GND CON <b>125.275 275.8</b>	CLNC DEL <b>125.275 275.8</b>
-----------------------	--	-----------------------------------	---------------------------------	----------------------------------



Procedure NA for arrivals at GAILL on V19 southwest bound.



ELEV	744	TDZE	736
------	-----	------	-----



CATEGORY	A	B	C	D
LPV DA	936/18		200 (200-1/2)	
LNAV/VNAV DA	1103/35		367 (400-5/8)	
LNAV MDA	1120/24	384 (400-1/2)	1120/35	384 (400-5/8)
CIRCLING	1240-1	496 (500-1)	1280-1 1/2 536 (600-1 1/2)	1400-2 656 (700-2)

TDZ/CL Rwy 5R  
REIL Rwy 23R  
HIRL Rwys 5L-23R and 5R-23L

EC-2, 20 FEB 2025 to 20 MAR 2025

EC-2, 20 FEB 2025 to 20 MAR 2025