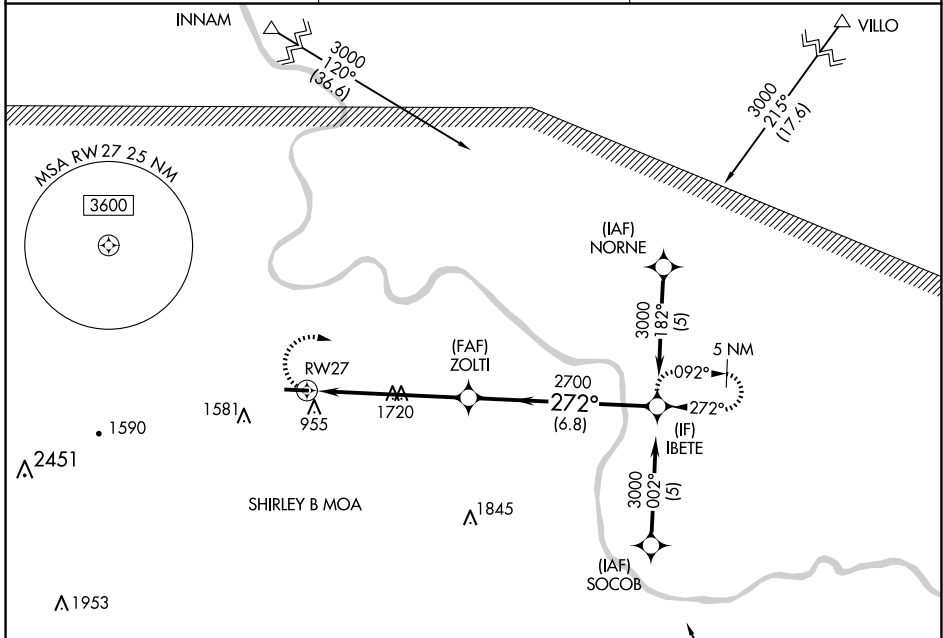


APP CRS 272°	Rwy Idg 4502
	TDZE 796
	Apt Elev 805

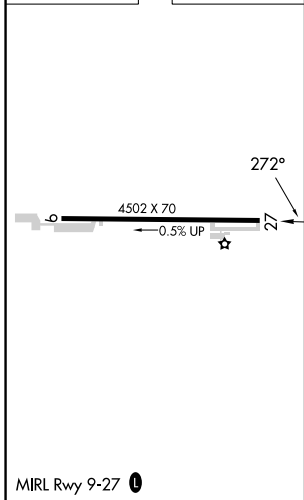
RNAV (GPS) RWY 27

MOUNTAIN VIEW WILCOX MEML FLD (7M2)

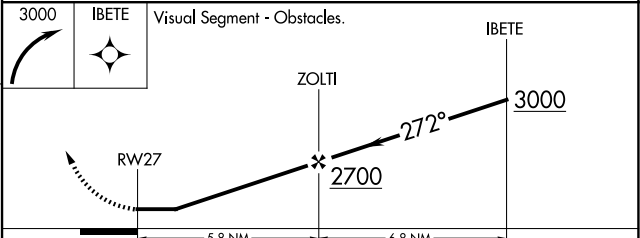
<p>NA DME/DME RNP-0.3 NA. Rwy 27 helicopter visibility reduction below 1 SM NA. Procedure NA at night. Use Flippers altimeter setting; if not received, use Batesville altimeter setting and increase all MDAs 20 feet.</p>	<p>MISSED APPROACH: Climbing right turn to 3000 direct IBETE and hold.</p>	
<p>FLP AWOS-3 132.075</p>	<p>MEMPHIS CENTER 126.85 281.55</p>	<p>UNICOM 122.7 (CTAF) 0</p>



ELEV 805	TDZE 796
----------	----------



Procedure NA for arrivals at UKORE on V305 southwest bound.



CATEGORY	A	B	C	D
LNAV MDA	2120-1¼ 1324 (1400-1¼)	2120-1½ 1324 (1400-1½)	2120-3 1324 (1400-3)	NA
CIRCLING	2120-1¼ 1315 (1400-1¼)	2120-1½ 1315 (1400-1½)	2120-3 1315 (1400-3)	NA

SC-1, 20 FEB 2025 to 20 MAR 2025

SC-1, 20 FEB 2025 to 20 MAR 2025