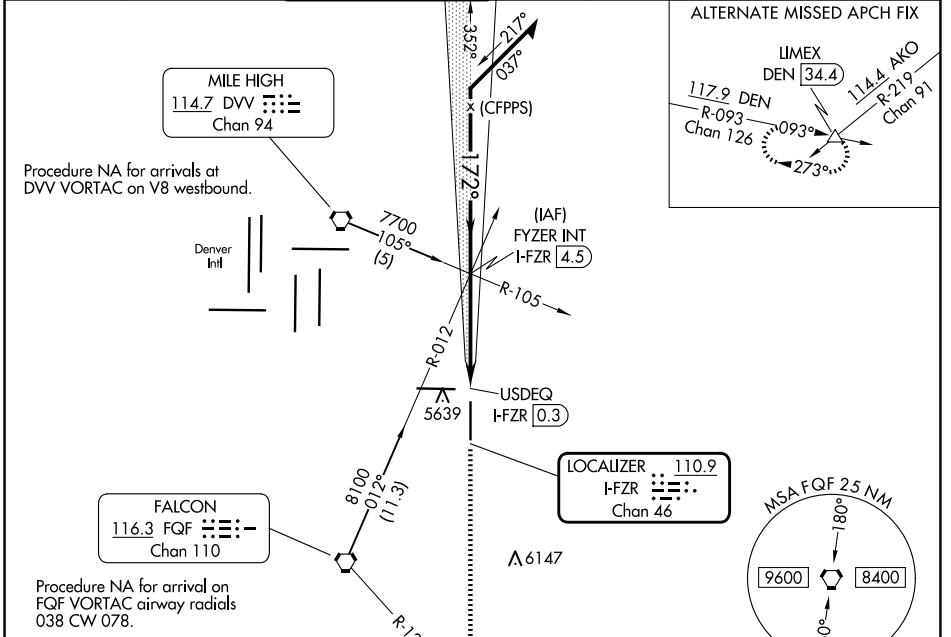


LOC/DME I-FZR 110.9 Chan 46	APP CRS 172°	Rwy Idg TDZE Apt Elev	8000 5491 5515
--	------------------------	-----------------------------	---

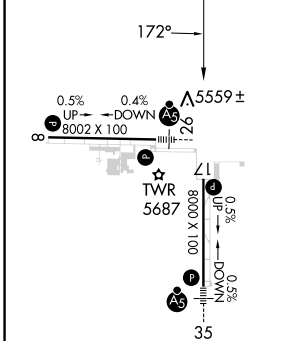
ILS or LOC RWY 17
COLORADO AIR AND SPACE PORT (CFO)

MISSED APPROACH: Climb to 8500 on heading 172° and FQF VORTAC R-127 to HUNTN INT/FQF 9.8 DME and hold.

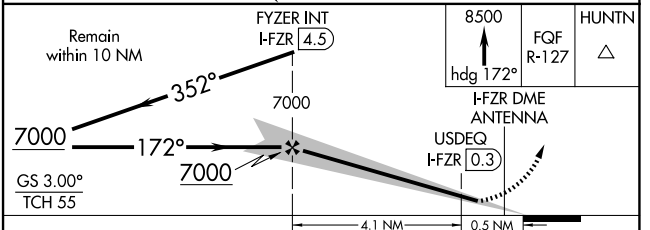
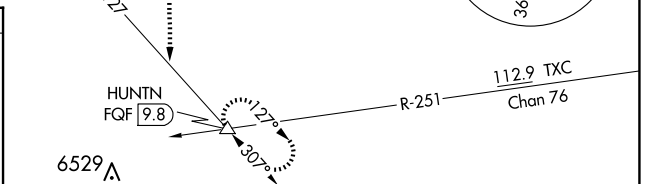
ATIS 119.025	DENVER APP CON 128.25 371.95	SPACE PORT TOWER ★ 120.2 (CTAF)	GND CON 124.7	CLNC DEL 124.7	CLNC DEL 121.75 (When twr closed)	UNICOM 122.95
------------------------	--	---	-------------------------	--------------------------	--	-------------------------



ELEV 5515	TDZE 5491
-----------	-----------



FAF to MAP 4.1 NM					
Knots	60	90	120	150	180
Min:Sec	4:06	2:44	2:03	1:38	1:22



CATEGORY	A	B	C	D
S-ILS 17	5691-3/4 200 (200-3/4)			
S-LOC 17	5820-1 329 (400-1)			
<input checked="" type="checkbox"/> CIRCLING	6000-1	485 (500-1)	6100-1 1/2 585 (600-1 1/2)	6300-2 1/2 785 (800-2 1/2)

SW-1, 20 FEB 2025 to 20 MAR 2025

SW-1, 20 FEB 2025 to 20 MAR 2025