

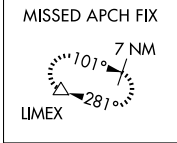
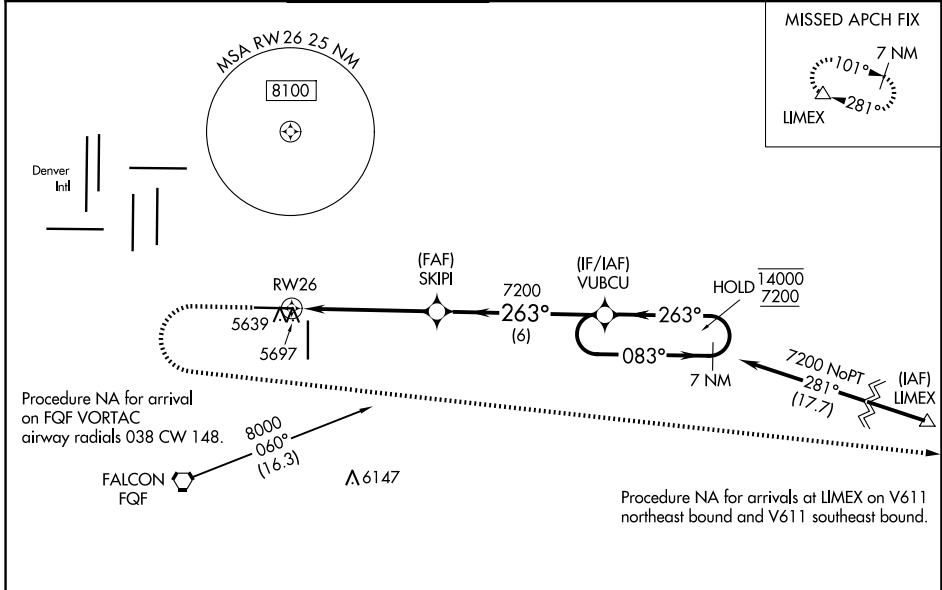
WAAS CH 93909 W26A	APP CRS 263°	Rwy Idg TDZE Apt Elev	8002 5489 5515
--	------------------------	-----------------------------	---

RNAV (GPS) RWY 26

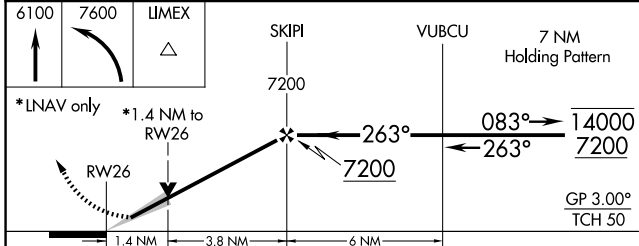
COLORADO AIR AND SPACE PORT (CFO)

RNP APCH.	MALSR	MISSED APPROACH: (Do not exceed 200K until LIMEX) Climb to 6100 then climbing left turn to 7600 direct LIMEX and hold.
<p>⚠ For uncompensated Baro-VNAV systems, LNAV/VNAV NA below -25°C or above 48°C. For inop ALS, increase LNAV/VNAV all Cats visibility to 1½ SM, and increase LNAV Cat C/D visibility to 1½ SM.</p>		

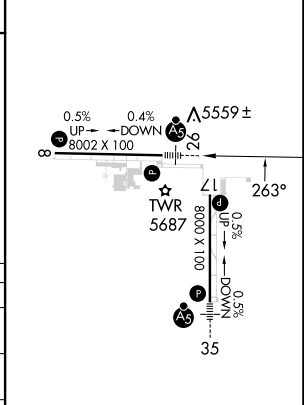
ATIS 119.025	DENVER APP CON 128.25 371.95	SPACE PORT TOWER * 120.2 (CTAF) 1	GND CON 124.7	CLNC DEL 124.7	CLNC DEL 121.75 (When twr closed)	UNICOM 122.95
------------------------	--	---	-------------------------	--------------------------	--	-------------------------



Δ 6270±



ELEV 5515	TDZE 5489
-----------	-----------



CATEGORY	A	B	C	D
LPV DA		5689-½	200 (200-½)	
LNAV/VNAV DA		5858-¾	369 (400-¾)	
LNAV MDA	5960-½	471 (500-½)	5960-1	471 (500-1)
CIRCLING	6000-1	485 (500-1)	6100-1½ 585 (600-1½)	6300-2½ 785 (800-2½)

REIL Rwy 8 and 17 1

HIRL Rwy 8-26 1

MIRL Rwy 17-35 1

SW-1, 20 FEB 2025 TO 20 MAR 2025

SW-1, 20 FEB 2025 TO 20 MAR 2025