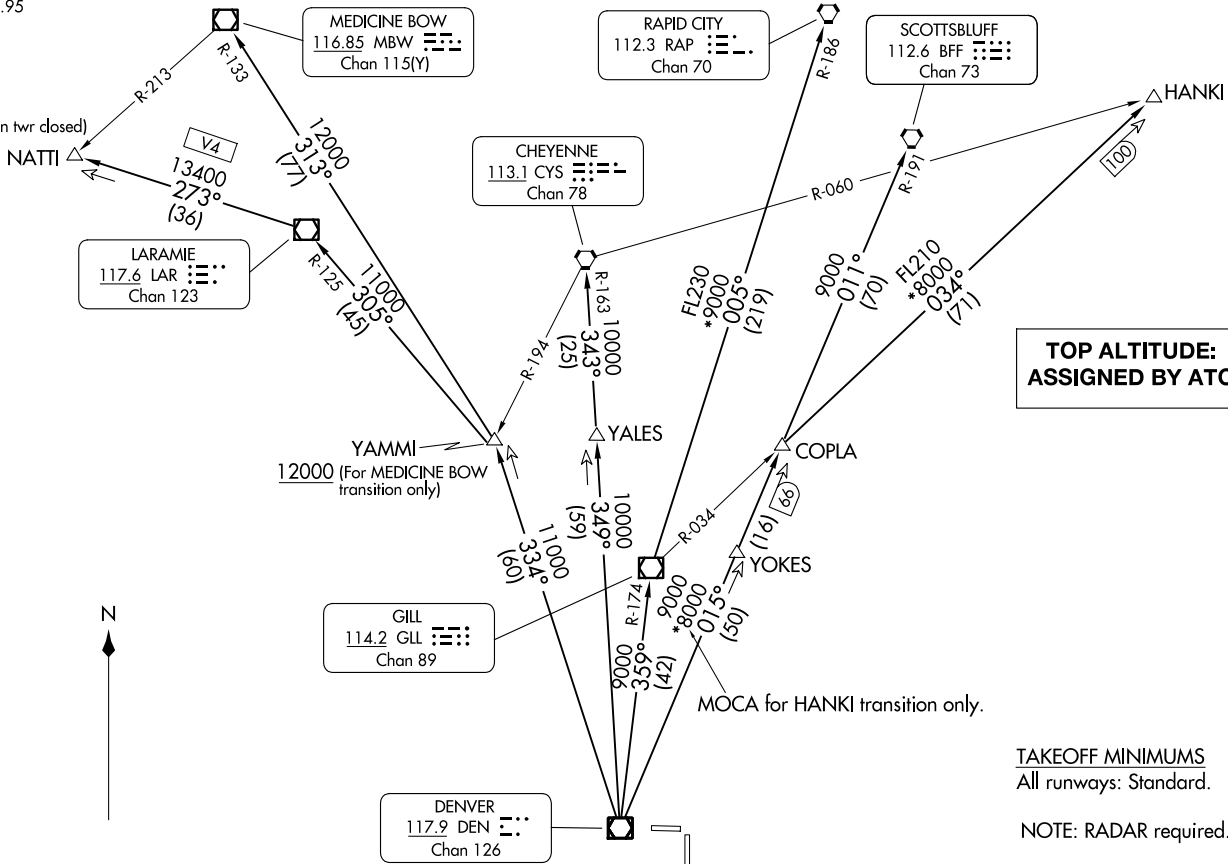


YELLOWSTONE FOUR DEPARTURE
(YELLOW4.DEN) 16JUL20

DENVER DEP CON
128.25 371.95
ATIS
119.025
CLNC DEL
124.7
CLNC DEL
121.75 (when twr closed)



NOTE: Chart not to scale.

TAKEOFF MINIMUMS
All runways: Standard.

NOTE: RADAR required.

(CONTINUED ON FOLLOWING PAGE)

DENVER, COLORADO
COLORADO AIR AND SPACE PORT (CFO)

(YELLOW4.DEN) 23334
YELLOWSTONE FOUR DEPARTURE
AL-6851 (FAA)
COLORADO AIR AND SPACE PORT (CFO)
DENVER, COLORADO



DEPARTURE ROUTE DESCRIPTION

TAKEOFF ALL RUNWAYS: Fly assigned heading and altitude for RADAR vectors to assigned transition. Expect filed altitude 10 minutes after departure.

LOST COMMUNICATIONS: If no transmissions are received within one minute after departure, maintain assigned heading until 7000 feet, then climb to filed altitude direct DEN VOR/DME, then on assigned transition. If filed altitude is above 10000 feet, cross DEN VOR/DME at or above 11000 feet.

CHEYENNE TRANSITION (YELLOW4.CYS): From over DEN VOR/DME on DEN R-349 and CYS R-163 to CYS VORTAC.

HANKI TRANSITION (YELLOW4.HANKI): From over DEN VOR/DME on DEN R-015 and GLL R-034 to HANKI.

LARAMIE TRANSITION (YELLOW4.LAR): From over DEN VOR/DME on DEN R-334 and LAR R-125 to LAR VOR/DME.

MEDICINE BOW TRANSITION (YELLOW4.MBW): From over DEN VOR/DME on DEN R-334 and MBW R-133 to MBW VOR/DME.

NATTI TRANSITION (YELLOW4.NATTI): From over DEN VOR/DME on DEN R-334 and LAR R-125 to LAR VOR/DME, then on LAR R-273 to NATTI.

RAPID CITY TRANSITION (YELLOW4.RAP): From over DEN VOR/DME on DEN R-359 and GLL R-174 to GLL VOR/DME, then on GLL R-005 and RAP R-186 to RAP VORTAC.

SCOTTSBLUFF TRANSITION (YELLOW4.BFF): From over DEN VOR/DME on DEN R-015 and BFF R-191 to BFF VORTAC.

SW-1, 20 FEB 2025 to 20 MAR 2025

SW-1, 20 FEB 2025 to 20 MAR 2025