

WAAS CH 90532 W29A	APP CRS 286°	Rwy Idg TDZE Apt Elev	3602 120 121
--	------------------------	-----------------------------	---

RNAV (GPS) RWY 29

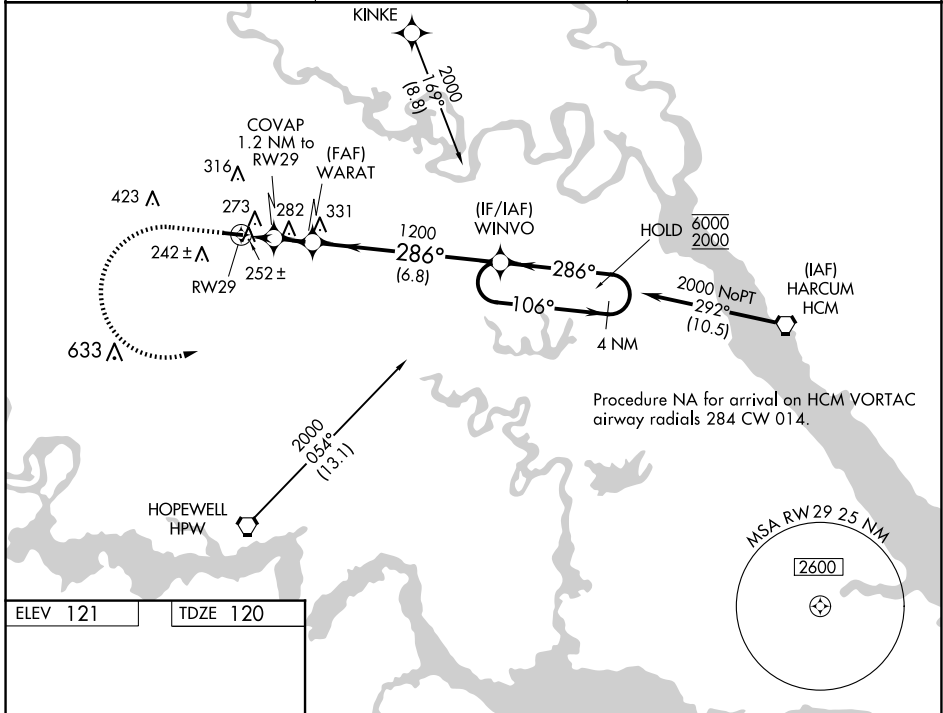
NEW KENT COUNTY (W96)

RNP APCH - GPS.

Rwy 29 helicopter visibility reduction below 1 SM NA.
 Procedure NA at night. When local altimeter setting not received,
 use RIC altimeter setting: increase all MDAs 40 feet and LNAV visibility
 Cat C 1/8 SM; increase LP and Circling visibility Cat C 1/4 SM.

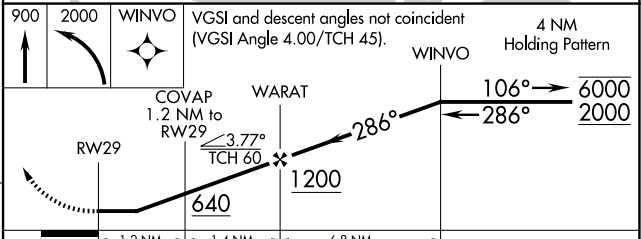
MISSED APPROACH: Climb to 900 then climbing left turn to 2000 direct WINVO and hold.

AWOS-3 119.875	POTOMAC APP CON 126.4 282.375	UNICOM 122.8 (CTAF) 0
--------------------------	---	---------------------------------



ELEV 121	TDZE 120
----------	----------

MIRL Rwy 11-29 0
 REIL Rwy 11 and 29 0



CATEGORY	A	B	C	D
LP MDA	540-1	420 (500-1)	540-1 1/8 420 (500-1 1/8)	NA
LNAV MDA	560-1	440 (500-1)	560-1 1/4 440 (500-1 1/4)	NA
C CIRCLING	620-1	499 (500-1)	760-1 3/4 639 (700-1 3/4)	NA

NE-3, 20 FEB 2025 to 20 MAR 2025

NE-3, 20 FEB 2025 to 20 MAR 2025