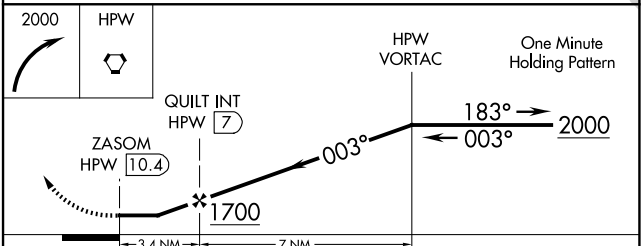
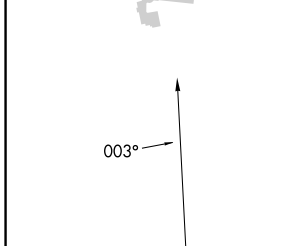
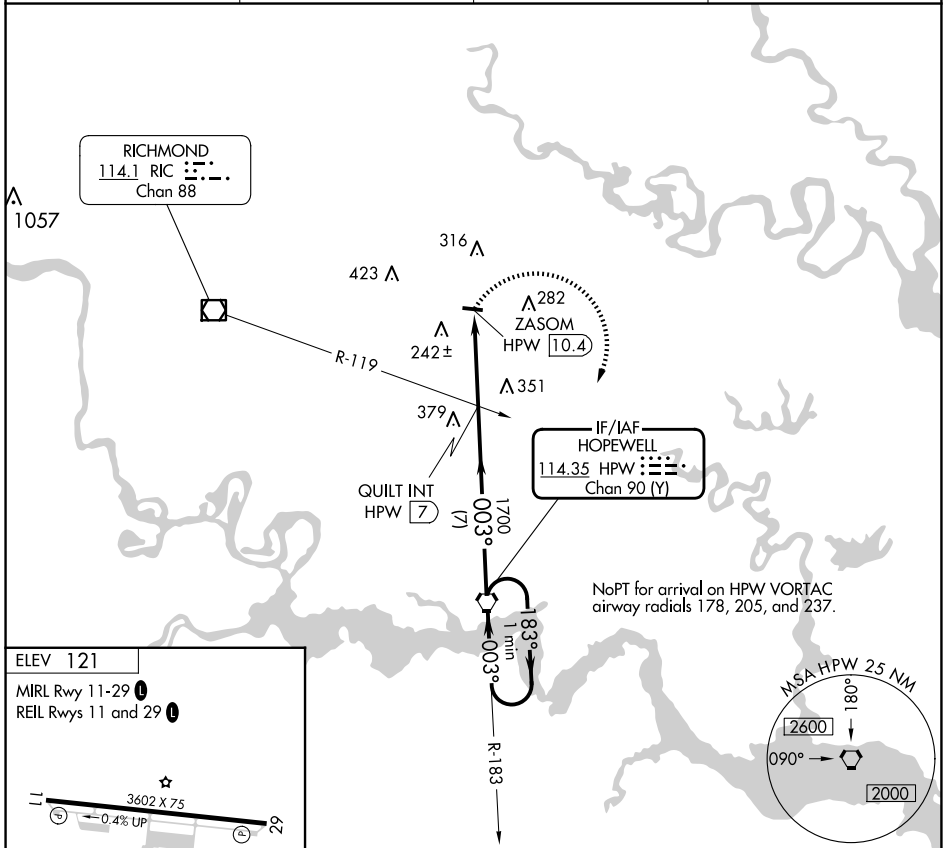


VORTAC HPW <b>114.35</b> Chan 90 (Y)	APP CRS <b>003°</b>	Rwy Idg TDZE Apt Elev	<b>N/A</b> <b>N/A</b> <b>121</b>
--	------------------------	-----------------------------	--

**VOR-A**  
NEW KENT COUNTY (W96)

<b>NA</b> Use Richmond Intl altimeter setting. Procedure NA at night. Helicopter visibility reduction below 1 SM NA.	MISSED APPROACH: Climbing right turn to 2000 direct HPW VORTAC and hold.
--	--

AWOS-3 <b>119.875</b>	RIC ASOS <b>119.15 263.025</b>	POTOMAC APP CON <b>126.4 282.375</b>	UNICOM <b>122.8 (CTAF)</b>
--------------------------	-----------------------------------	---	-------------------------------



FAF to MAP 3.4 NM					
Knots	60	90	120	150	180
Min:Sec	3:24	2:16	1:42	1:22	1:08
CATEGORY	A	B	C	D	
<b>CIRCLING</b>	660-1 539 (600-1)		760-1 <sup>3</sup> / <sub>4</sub> 639 (700-1 <sup>3</sup> / <sub>4</sub> )		NA

NE-3, 20 FEB 2025 to 20 MAR 2025

NE-3, 20 FEB 2025 to 20 MAR 2025