

APP CRS <b>185°</b>	Rwy Idg <b>4220</b>
	TDZE <b>339</b>
	Apt Elev <b>345</b>

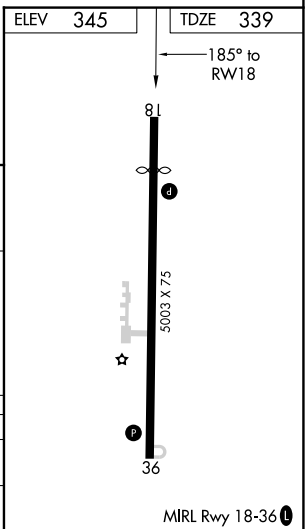
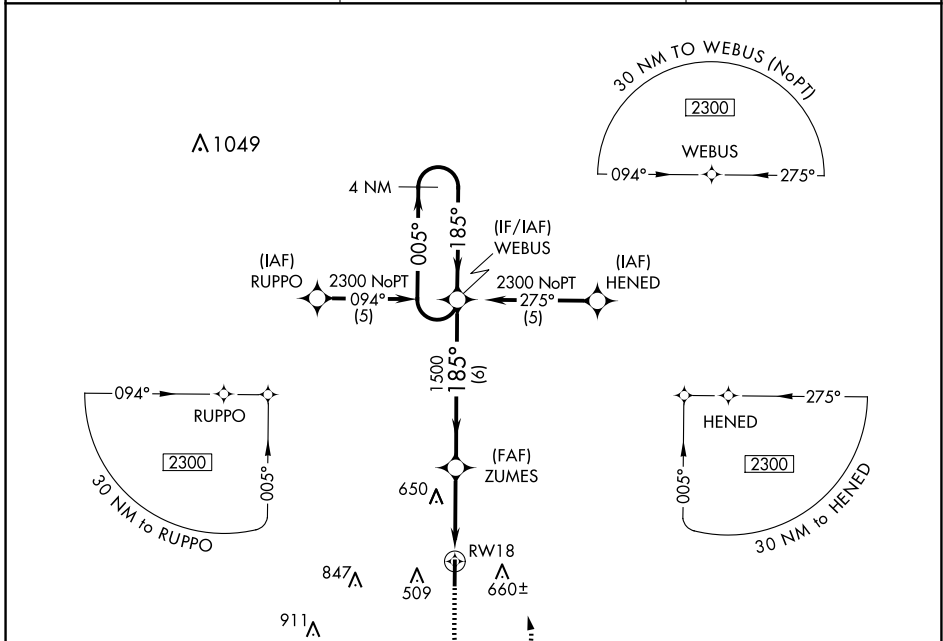
# RNAV (GPS) RWY 18

DR C P SAVAGE SR (53A)

**NA** DME/DME RNP-0.3 NA. Procedure NA at night. Helicopter visibility reduction below 1 SM NA. Use Americus altimeter setting, when not received use Macon altimeter setting and increase all MDA 20 feet.

**MISSED APPROACH:** Climb to 1500 then climbing left turn to 2300 direct WEBUS and hold.

ACJ AWOS-3 <b>128.375</b>	ATLANTA APP CON * <b>124.2 279.6</b>	CTAF <b>122.9</b>
------------------------------	---	----------------------



VGSI and descent angles not coincident (VGSI Angle 3.30/TCH 35).		1500	2300	WEBUS
4 NM Holding Pattern		↑	↘	✦
2300	← 005°			
	185° →			
			ZUMES	
			1500	
				RWY 18
			6 NM	3.5 NM

CATEGORY	A	B	C	D
LNVA MDA	1020-1	681 (700-1)	1020-2 681 (700-2)	NA
CIRCLING	1020-1	675 (700-1)	1120-2¼ 775 (800-2¼)	NA

SE-4, 20 FEB 2025 to 20 MAR 2025

SE-4, 20 FEB 2025 to 20 MAR 2025