

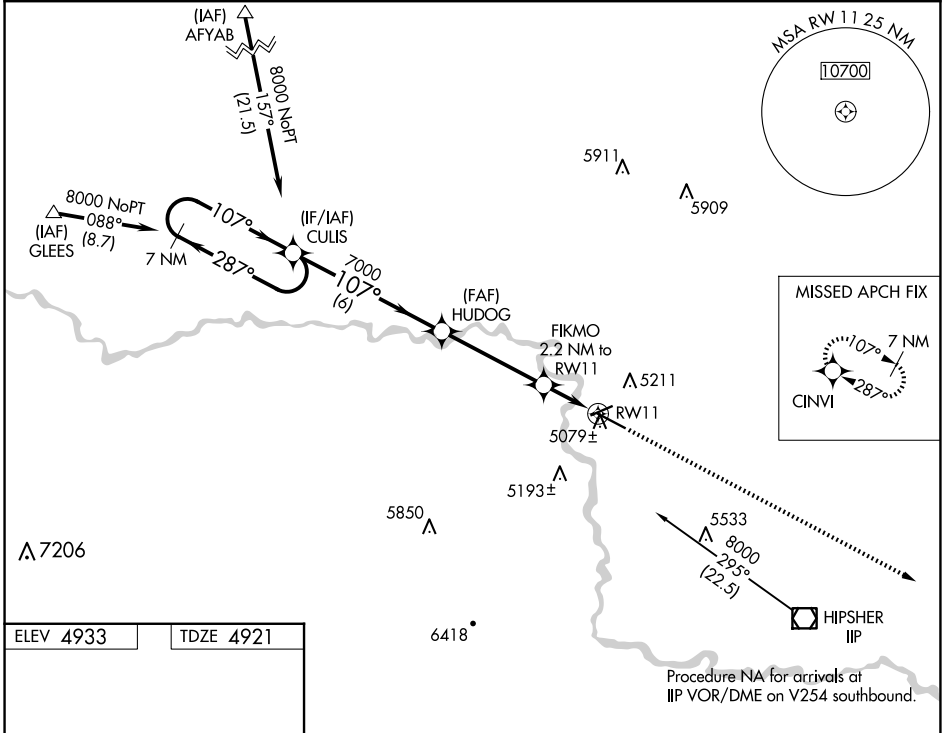
WAAS CH <b>58018</b> <b>W11A</b>	APP CRS <b>107°</b>	Rwy Idg TDZE Apt Elev <b>6534</b> <b>4921</b> <b>4933</b>
--	------------------------	--

# RNAV (GPS) RWY 11

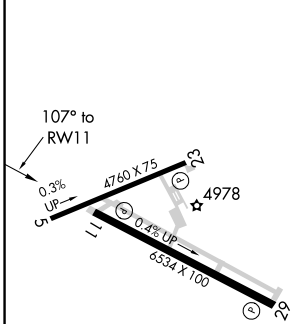
CONVERSE COUNTY (DGW)

RNP APCH.	MISSED APPROACH: Climb to 8000 direct CINVI and hold.
For uncompensated Baro-VNAV systems, LNAV/VNAV NA below -24°C (-11°F) or above 39°C (102°F).	

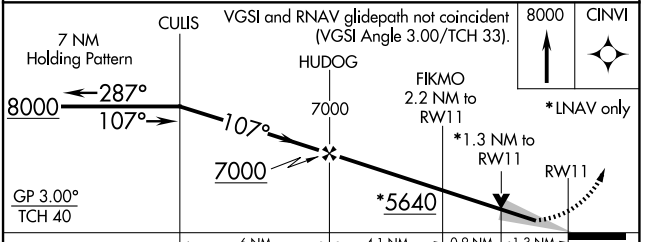
ASOS <b>135.225</b>	DENVER CENTER <b>135.6 363.025</b>	UNICOM <b>122.8 (CTAF) 0</b>
------------------------	---------------------------------------	---------------------------------



ELEV 4933	TDZE 4921
-----------	-----------



REIL Rwy 11 and 29 0	MIRL Rwy 11-29 and 5-23 0
----------------------	---------------------------



CATEGORY	A	B	C	D
LPV DA		5121-3/4	200 (200-3/4)	
LNAV/VNAV DA		5329-1 1/2	408 (400-1 1/2)	
LNAV MDA		5340-1 419 (500-1)	5340-1 1/4 419 (500-1 1/4)	

NW-1, 20 FEB 2025 to 20 MAR 2025

NW-1, 20 FEB 2025 to 20 MAR 2025