

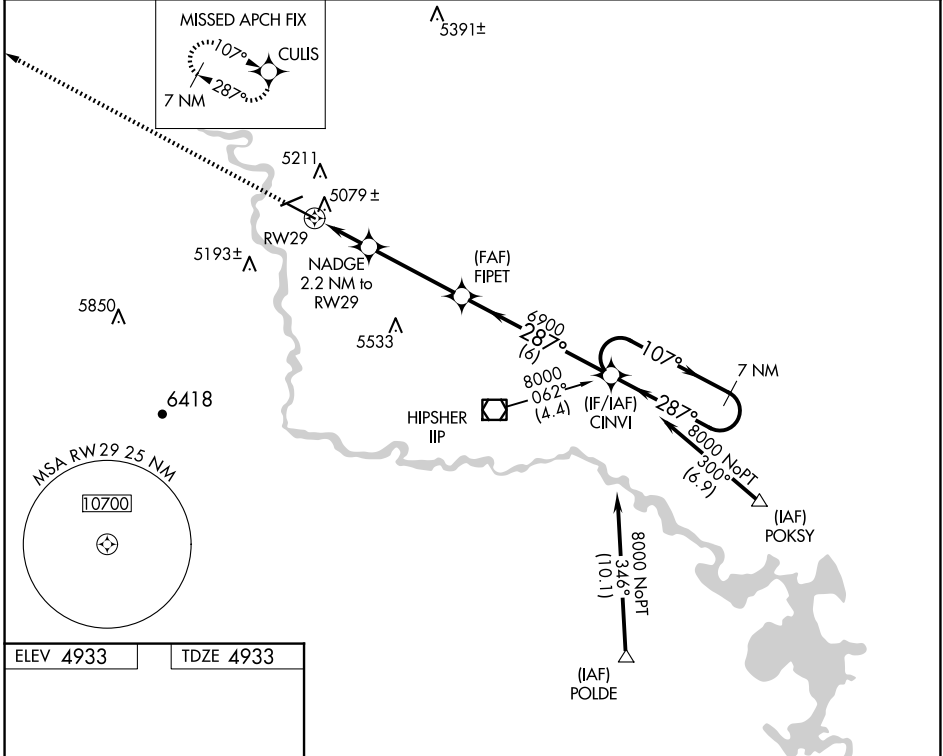
WAAS CH <b>61018</b> <b>W29A</b>	APP CRS <b>287°</b>	Rwy Idg TDZE Apt Elev	<b>6534</b> <b>4933</b> <b>4933</b>
--	------------------------	-----------------------------	---

# RNAV (GPS) RWY 29

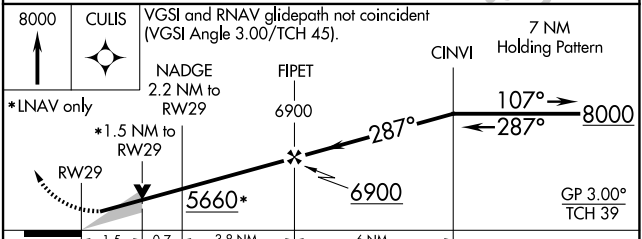
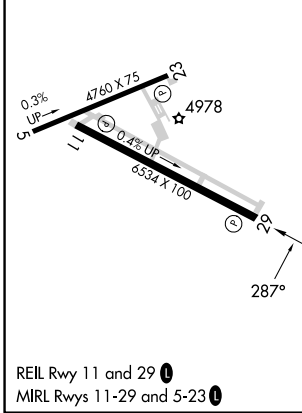
CONVERSE COUNTY (DGW)

RNP APCH-GPS.	MISSED APPROACH: Climb to 8000 direct CULIS and hold.
<p>▼ For uncompensated Baro-VNAV systems, LNAV/VNAV NA below -24°C or above 39°C.</p>	

ASOS <b>135.225</b>	DENVER CENTER <b>135.6 363.025</b>	UNICOM <b>122.8 (CTAF) 0</b>
------------------------	---------------------------------------	---------------------------------



ELEV 4933	TDZE 4933
-----------	-----------



CATEGORY	A	B	C	D
LPV DA	5133-3/4 200 (200-3/4)			
LNAV/VNAV DA	5369-1 1/2 436 (500-1 1/2)			
LNAV MDA	5440-1	507 (600-1)	5440-1 1/2	507 (600-1 1/2)
CIRCLING	5520-1	587 (600-1)	5680-2 1/4	5820-3
			747 (800-2 1/4)	887 (900-3)

NW-1, 20 FEB 2025 to 20 MAR 2025

NW-1, 20 FEB 2025 to 20 MAR 2025