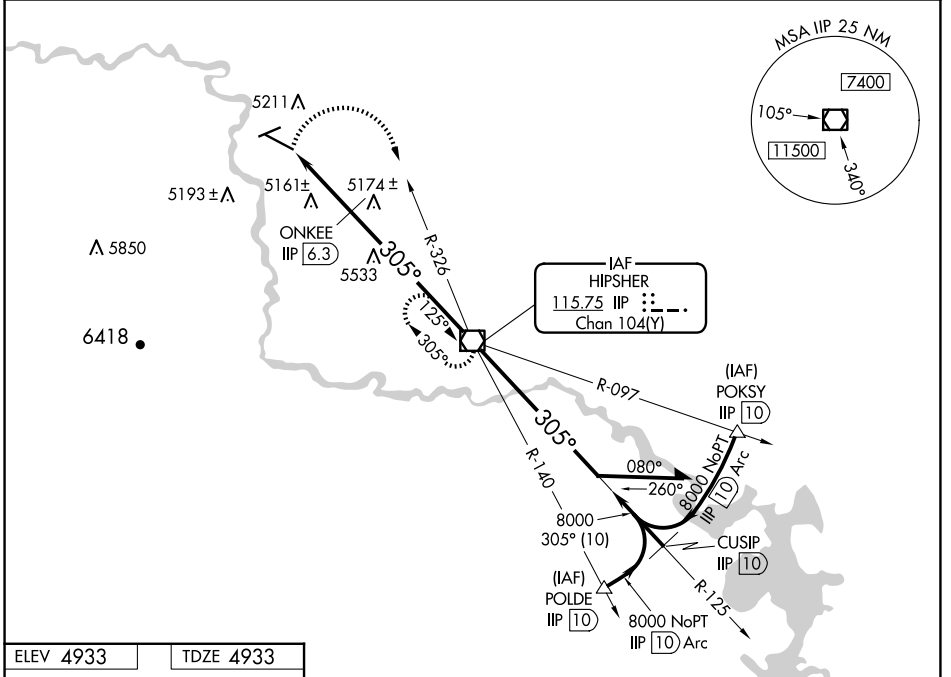


VOR/DME IIP 115.75 Chan 104(Y)	APP CRS 305°	Rwy Idg TDZE Apt Elev 6534 4933 4933
--	------------------------	--

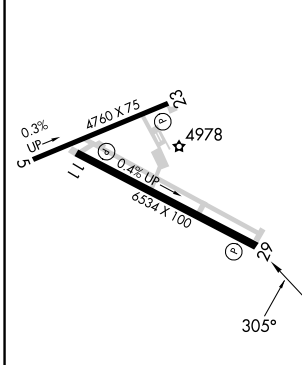
VOR RWY 29
CONVERSE COUNTY (DGW)

MISSED APPROACH: Climbing right turn to 8000 via heading 160° and IIP VOR/DME R-326 to IIP VOR/DME and hold, continue climb-in-hold to 8000.

ASOS 135.225	DENVER CENTER 135.6 363.025	UNICOM 122.8 (CTAF)
------------------------	---------------------------------------	-------------------------------



ELEV 4933	TDZE 4933
-----------	-----------



REIL Rwy 11 and 29
MIRL Rws 11-29 and 5-23

FAF to MAP 9.4 NM

Knots	60	90	120	150	180
Min:Sec	9:24	6:16	4:42	3:46	3:08

8000	IIP R-326	IIP	VGSI and descent angles not coincident (VGSI Angle 3.00/TCH 45).	
hdg 160°			Remain within 10 NM	
ONKEE IIP 6.3				
IIP 9.4	IIP 8	IIP 6.3		
5960	3.03° TCH 40	8000	125°	
1.4	1.7	6.3 NM	1/4	
CATEGORY	A	B	C	D
S-29	5960-1 1/4 1027 (1100-1 1/4)	5960-1 1/2 1027 (1100-1 1/2)	5960-3	1027 (1100-3)
CIRCLING	5960-1 1/4 1027 (1100-1 1/4)	5960-1 1/2 1027 (1100-1 1/2)	5960-3	1027 (1100-3)
ONKEE FIX MINIMUMS				
S-29	5420-1	487 (500-1)	5420-1 1/4 487 (500-1 1/4)	5420-1 1/2 487 (500-1 1/2)
CIRCLING	5520-1	587 (600-1)	5680-2 1/4 747 (800-2 1/4)	5820-3 887 (900-3)

NW-1, 20 FEB 2025 to 20 MAR 2025

NW-1, 20 FEB 2025 to 20 MAR 2025