

LOC/DME I-JWN 110.3 Chan 40	APP CRS 198°	Rwy Idg TDZE Apt Elev	6001 501 501
---	------------------------	-----------------------------	---

ILS or LOC RWY 20

JOHN C TUNE (JWN)

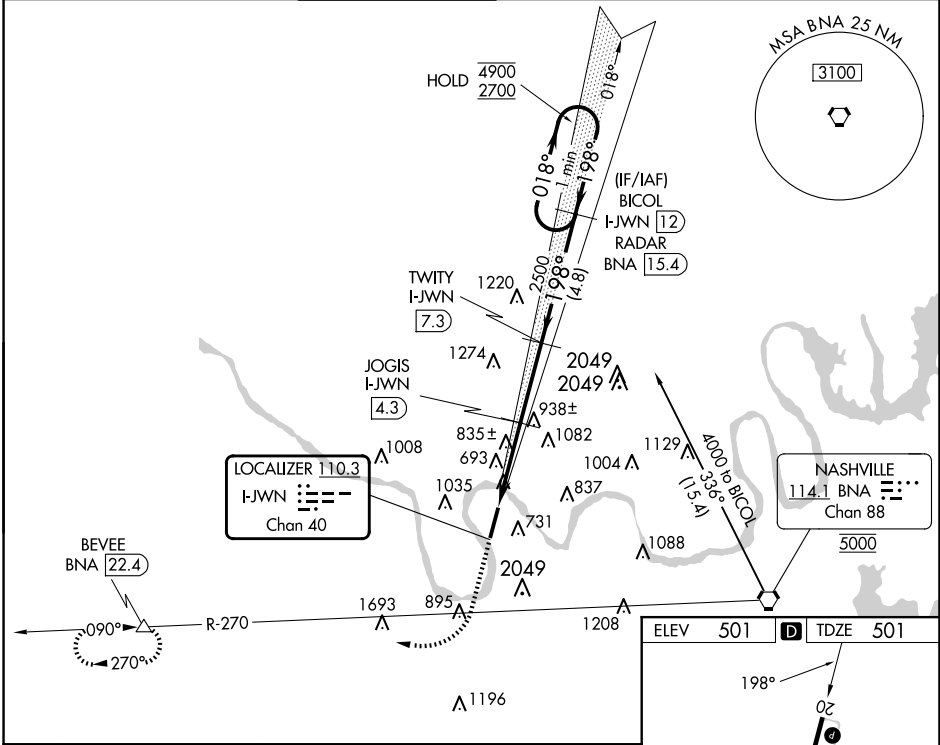
DME required.

V Circling NA east of Rwy 2-20. VDP NA when using Nashville Intl altimeter setting.

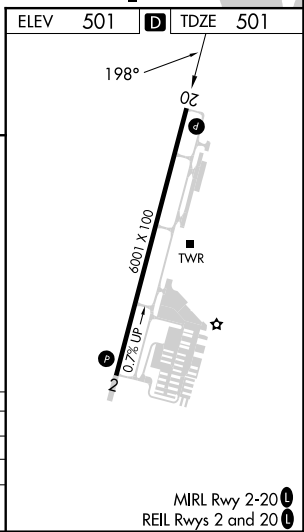
▲ NA When local altimeter setting not received, use Nashville Intl altimeter setting and increase S-ILS 20 DA to 738 feet, increase all MDAs 40 feet.

MISSED APPROACH: Climb to 2200 then climbing right turn to 3000 on BNA VORTAC R-270 to BEVEE/BNA 22.4 DME and hold.

ATIS 127.075	NASHVILLE APP CON 119.35 372.0	JOHN TUNE TOWER ★ 119.45 (CTAF) 0	GND CON 121.7	CLNC DEL 121.7	CLNC DEL 124.55 (when twr closed)	UNICOM 122.7
------------------------	--	--	-------------------------	--------------------------	--	------------------------



2200 ↑ 3000 ↻ BNA R-270 BEVEE △ TWITY I-JWN [7.3] JOGIS I-JWN [4.3] I-JWN [2.9] I-JWN [1.1]	BICOL I-JWN [12] RADAR One Minute Holding Pattern 4900 2700 018° → ← 198° 2500 1560 GS 3.00° TCH 40 1.8 NM 1.5 NM 3 NM 4.8 NM			
CATEGORY	A	B	C	D
S-ILS 20	701-¾ 200 (200-¾)			
S-LOC 20	1100-1	599 (600-1)	1100-1¾	599 (600-1¾)
C CIRCLING	1200-1	699 (700-1)	1340-2½	1340-2¾
			839 (900-2½)	839 (900-2¾)



SE-1, 20 FEB 2025 to 20 MAR 2025

SE-1, 20 FEB 2025 to 20 MAR 2025