

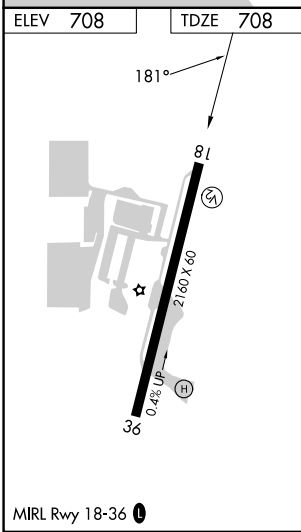
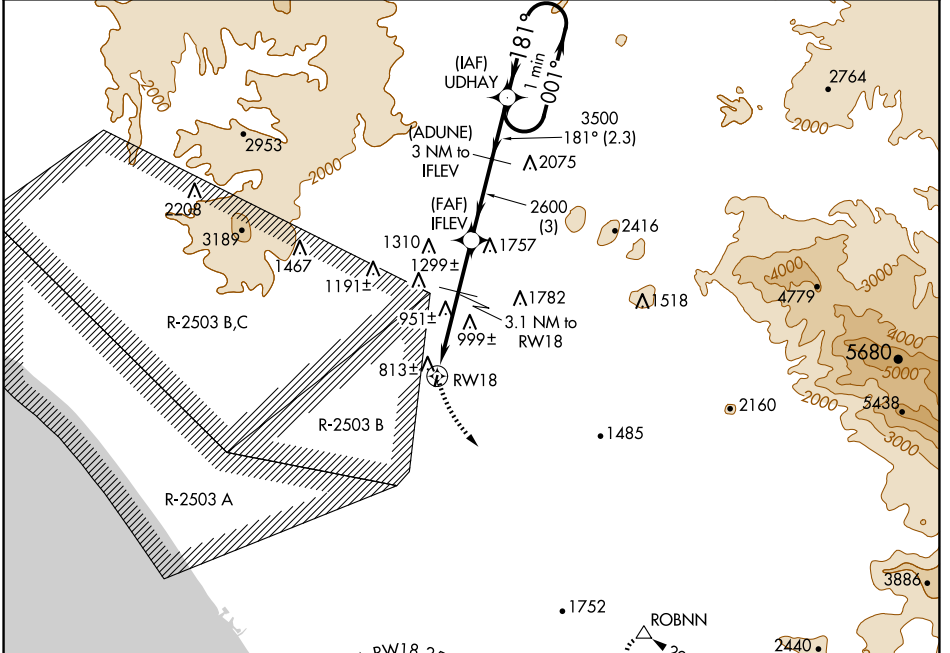
APP CRS	Rwy Idg	2160
181°	TDZE	708
	Apt Elev	708

GPS RWY 18
FALLBROOK COMMUNITY AIRPARK (L18)

⚠ Circling NA west of Rwy 18-36. When local altimeter setting not received, use Miramar MCAS (Joe Foss Fld) altimeter setting and increase all MDAs 120 feet.

⚠ MISSED APPROACH: Climbing left turn to 5000 direct ROBNN WP and hold.

AWOS-3P 118.425	SOCAL APP CON 127.3 323.0	CTAF 123.05 0
---------------------------	-------------------------------------	-------------------------



					One Minute Holding Pattern 001° → 4000 ← 181°
	5000	3.1 NM to RW18	3.1 NM to RW18	3500	*1920 when using Miramar altimeter setting.
3.1 NM	1.9 NM	3 NM	2.3 NM		
CATEGORY	A	B	C	D	
S-18	1260-1	552 (600-1)			NA
CIRCLING	1260-1 552 (600-1)	1380-1 672 (700-1)			NA

SW-3, 20 FEB 2025 to 20 MAR 2025

SW-3, 20 FEB 2025 to 20 MAR 2025