

# BARMY FIVE DEPARTURE (RNAV)

SE-2, 20 FEB 2025 to 20 MAR 2025

RNAV 1 - DME/DME/IRU or GPS.  
RADAR required.

**TOP ALTITUDE:**  
3000

CHARLOTTE DEP CON  
134.75 257.2  
AWOS-3  
119.675  
CLNC DEL (GCO)  
124.9  
UNICOM  
123.05

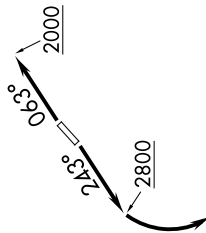
DATTO

RALEIGH/DURHAM  
RDU

TAR RIVER  
TYI

NOTE: For turbo jets only.  
NOTE: If unable to accept climb rates, advise ATC on initial contact.  
NOTE: Transponder code will be issued via PDC or Charlotte CLNC DEL.  
NOTE: Upon reaching 10000 MSL, accelerate to and maintain 280K,  
if unable advise ATC.

OLUBE



EBOOK

BATTA

FL180  
\*1900  
077° (39)

FL180  
\*2100  
077° (13)

FL180  
\*2300  
077° (22)

FL180  
\*3300  
077° (70)

FL180  
\*3400  
084° (70)

FL180  
\*3400  
088° (18)

FL180  
\*3400  
088° (13)

FL180  
\*3400  
088° (13)

FL180  
\*3400  
088° (13)

FL180  
\*3400  
088° (13)

FL180  
\*3400  
088° (13)

FL180  
\*3400  
088° (13)

FL180  
\*3400  
088° (13)

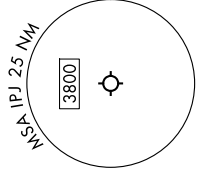
TAKEOFF MINIMUMS  
Rwys 5, 23: Standard.

## DEPARTURE ROUTE DESCRIPTION

**TAKEOFF RUNWAY 5:** Climb on heading 063° to 2000 before proceeding on course, then on heading assigned by ATC, thence. . . .  
**TAKEOFF RUNWAY 23:** Climb on heading 243° to 2800 before turning left, then on heading assigned by ATC, thence. . . .

. . . on RADAR vectors to MESHY, then on depicted route to BARMY. Then on assigned transition. Maintain 3000, expect clearance to filed altitude within 10 minutes after departure.

NUTZE TRANSITION (BARMY5.NUTZE)  
RALEIGH/DURHAM TRANSITION (BARMY5.RDU)  
TAR RIVER TRANSITION (BARMY5.TYI)



NOTE: Chart not to scale.

SE-2, 20 FEB 2025 to 20 MAR 2025