

|             |          |             |
|-------------|----------|-------------|
| APP CRS     | Rwy Idg  | <b>6669</b> |
| <b>049°</b> | TDZE     | <b>73</b>   |
|             | Apt Elev | <b>76</b>   |

# RNAV (GPS) RWY 5

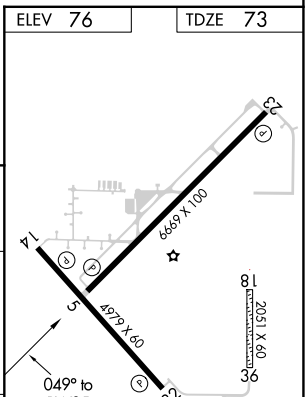
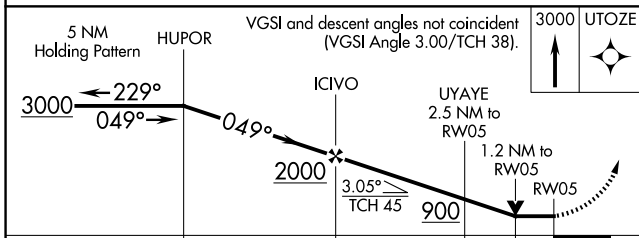
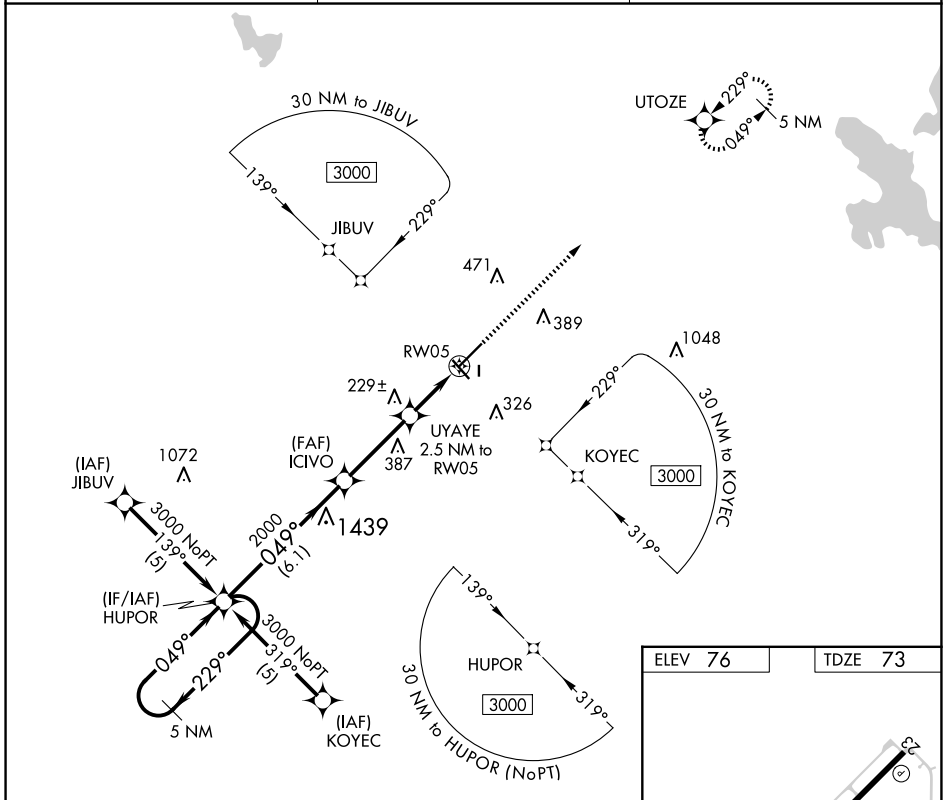
WILLISTON MUNI (X60)

RNP APCH.

When local altimeter setting not received, use Ocala altimeter setting and increase all MDAs 60 feet and all Cat C visibilities ¼ SM. Circling Rwy 14, 32 NA at night. Rwy 5 helicopter visibility reduction below ¾ SM NA. Circling NA to Rwnys 18 and 36.

MISSED APPROACH: Climb to 3000 direct UTOZE and hold.

|                           |   |                                   |
|---------------------------|---|-----------------------------------|
| AWOS-3T<br><b>118.425</b> | JACKSONVILLE APP CON<br><b>118.6 251.15</b> | UNICOM<br><b>122.975 (CTAF) 0</b> |
|---------------------------|---|-----------------------------------|



| CATEGORY | A                    | B                    | C                      | D  |
|----------|----------------------|----------------------|------------------------|----|
| LNVA MDA | 480-1                | 407 (500-1)          | 480-1¼<br>407 (500-1¼) | NA |
| CIRCLING | 520-1<br>444 (500-1) | 640-1<br>564 (600-1) | 840-2¼<br>764 (800-2¼) | NA |

HIRL Rwy 5-23 0

MIRL Rwy 14-32 0

REIL Rwnys 5, 14, 23, and 32 0

SE-3, 20 FEB 2025 to 20 MAR 2025

SE-3, 20 FEB 2025 to 20 MAR 2025