

WAAS CH 45516 W 18A	APP CRS 182°	Rwy ldg TDZE Apt Elev	3700 72 74
---	------------------------	-----------------------------	---------------------------------------

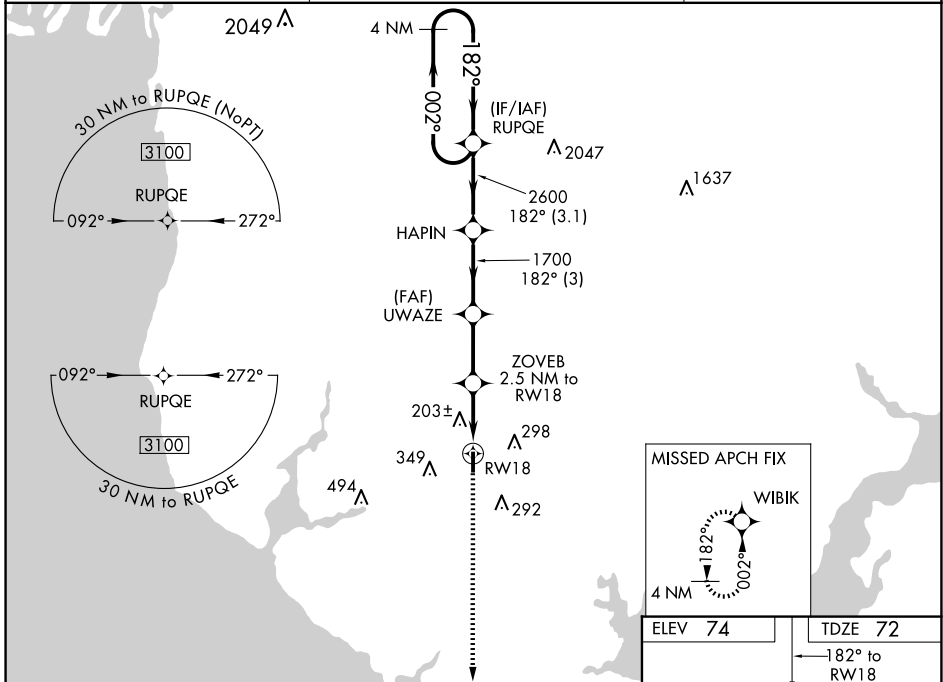
RNAV (GPS) RWY 18

FOLEY MUNI (5R.4)

▼ Baro-VNAV NA. DME/DME RNP-0.3 NA. Procedure NA at night. Helicopter visibility reduction below 1 SM NA. Use Fairhope altimeter setting. When not received, use Gulf Shores altimeter setting and increase LPV DA to 397 feet, LNAV/VNAV DA to 547 feet, and all MDA 20 feet; increase LNAV Cat C visibility 1/8 mile and Circling Cat C visibility 1/4 mile.

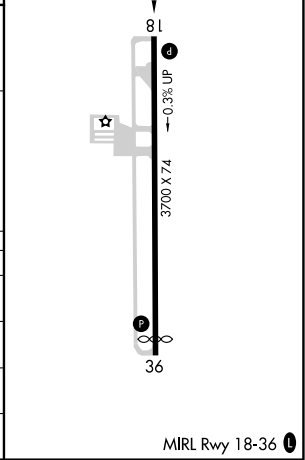
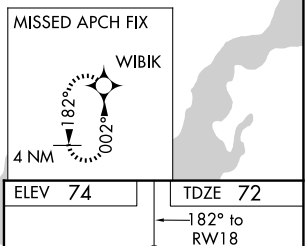
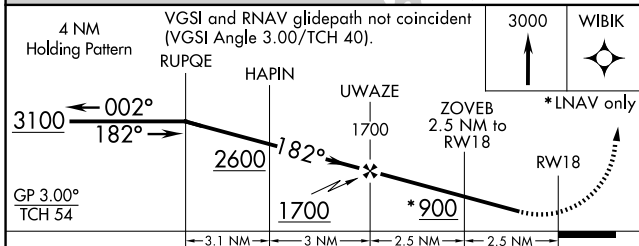
▲ NA MISSED APPROACH: Climb to 3000 direct WIBIK and hold, continue climb-in-hold to 3000.

CGF AWOS-3PT 118.425	PENSACOLA APP CON 118.6 380.6	UNICOM 123.05 (CTAF) 0
--------------------------------	---	----------------------------------



SE-4, 20 FEB 2025 to 20 MAR 2025

SE-4, 20 FEB 2025 to 20 MAR 2025



CATEGORY	A	B	C	D
LPV DA	393-1	321 (400-1)		NA
LNAV/ VNAV DA	543-1 1/8	471 (500-1 1/8)		NA
LNAV MDA	480-1	408 (500-1)	480-1 1/8 408 (500-1 1/8)	NA
C CIRCLING	680-1	606 (700-1)	880-2 1/4 806 (900-2 1/4)	NA

MIRL Rwy 18-36 0