

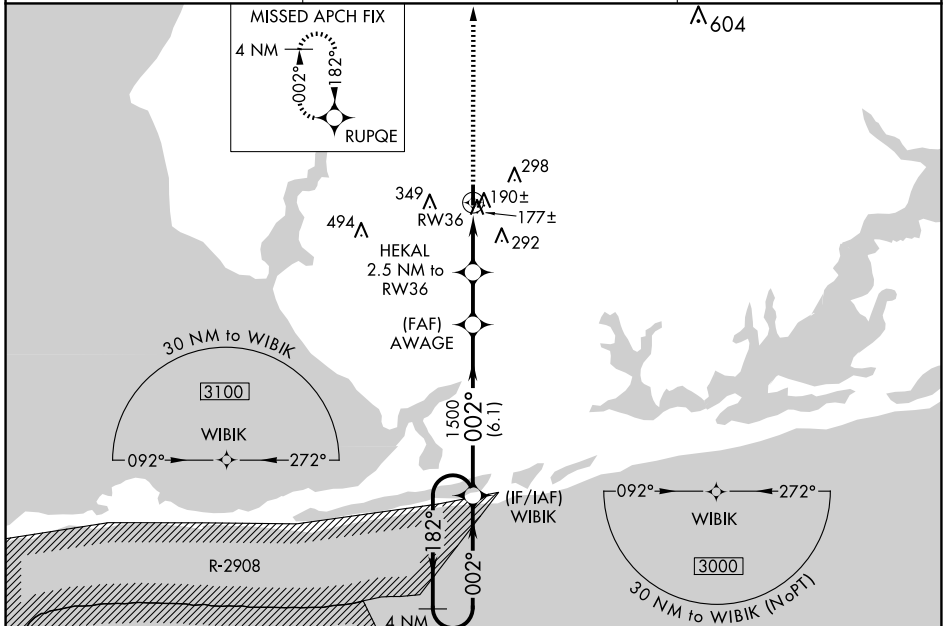
WAAS CH <b>93515</b> <b>W36A</b>	APP CRS <b>002°</b>	Rwy ldg <b>3513</b> TDZE <b>73</b> Apt Elev <b>74</b>
--	------------------------	---

# RNAV (GPS) RWY 36

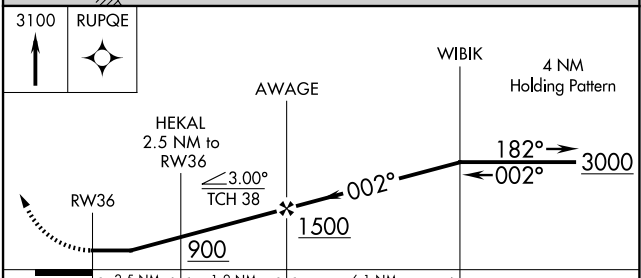
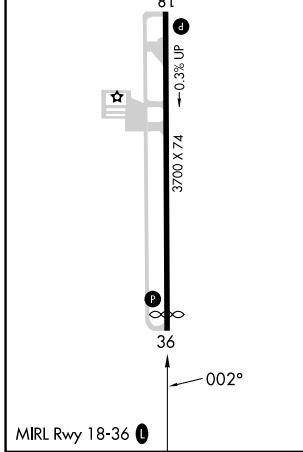
FOLEY MUNI (5R4)

RNP APCH - GPS		MISSED APPROACH: Climb to 3100 direct RUPQE and hold, continue climb-in-hold to 3100.
Procedure NA at night. Rwy 36 helicopter visibility reduction below 1 SM NA. Use Fairhope altimeter setting. When not received, use Gulf Shores altimeter setting and increase all MDA 20 feet; increase LP and LNAV Cat C visibility 1/8 SM and Circling Cat C visibility 1/4 SM.		

CQF AWOS-3PT <b>118.425</b>	PENSACOLA APP CON <b>118.6 380.6</b>	UNICOM <b>123.05 (CTAF) 0</b>
--------------------------------	---	----------------------------------



ELEV 74	TDZE 73
---------	---------



CATEGORY	A	B	C	D
LP MDA	500-1	427 (500-1)	500-1¼ 427 (500-1¼)	NA
LNAV MDA	500-1	427 (500-1)	500-1¼ 427 (500-1¼)	NA
<b>C</b> CIRCLING	680-1	606 (700-1)	880-2¼ 806 (900-2¼)	NA

SE-4, 20 FEB 2025 to 20 MAR 2025

SE-4, 20 FEB 2025 to 20 MAR 2025