

LOC/DME I-TDF 108.7 Chan 24	APP CRS 060°	Rwy Idg TDZE Apt Elev 5702 604 609
--	------------------------	--

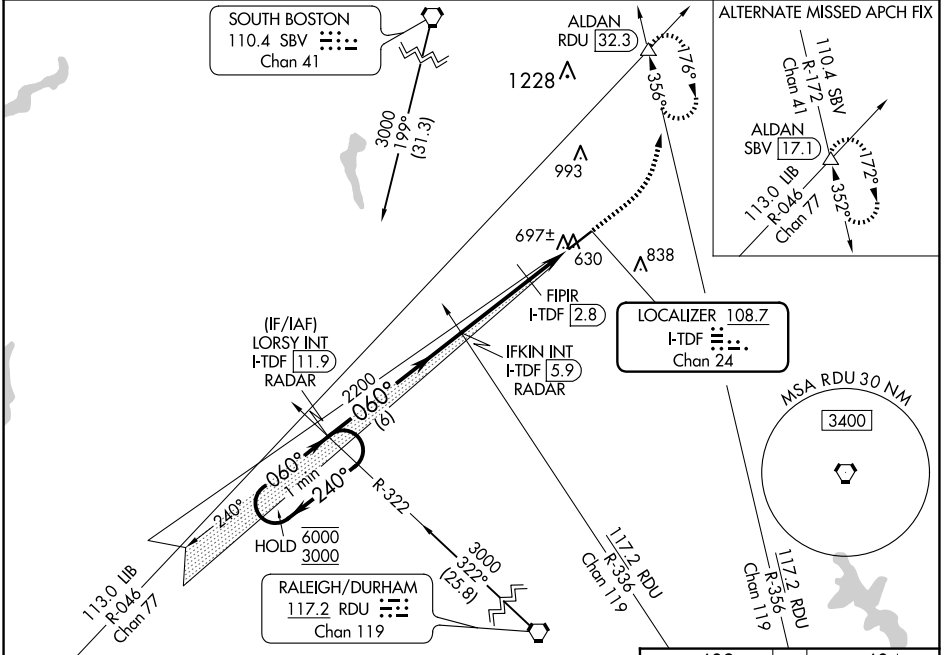
ILS or LOC RWY 6

RALEIGH RGNL AT PERSON COUNTY (TDF)

▼ For inop ALS, increase S-LOC 6 visibility Cats C/D to 1½ SM and increase FIPR fix minimums
▲ NA S-LOC 6 visibility Cats C/D to 1 SM.

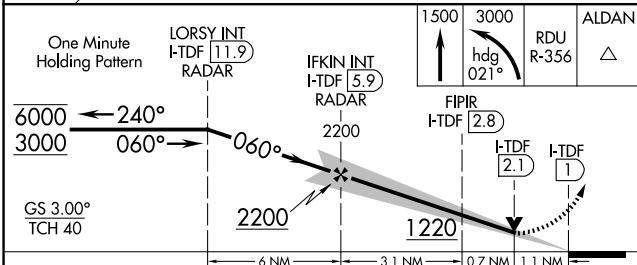
MALSR MISSED APPROACH: Climb to 1500 then climbing left turn to 3000 on heading 021° and on RDU VORTAC R-356 to ALDAN INT/RDU 32.3 DME and hold, continue climb-in-hold to 3000.

AWOS-3 126.725	RALEIGH APP CON 132.35 256.9	GCO 119.7	UNICOM 122.7 (CTAF) 0
--------------------------	--	---------------------	---------------------------------



SE-2, 20 FEB 2025 to 20 MAR 2025

SE-2, 20 FEB 2025 to 20 MAR 2025



ELEV 609	TDZE 604
One Minute Holding Pattern	LORSY INT I-TDF 11.9 RADAR
IFKIN INT I-TDF 5.9 RADAR	FIPR I-TDF 2.8
1500	3000
↑	hdg 021°
RDU R-356	ALDAN
△	
GS 3.00°	TCH 40
6000 ← 240°	060° →
3000	
2200	
1220	
609	
6 NM	3.1 NM
0.7 NM	1.1 NM
REIL Rwy 24 0	MIRL Rwy 6-24 0
FAF to MAP 4.9 NM	
Knots	60 90 120 150 180
Min:Sec	4:54 3:16 2:27 1:58 1:38

CATEGORY	A	B	C	D
S-ILS 6	804-½ 200 (200-½)			
S-LOC 6	1220-½	616 (700-½)	1220-¾	616 (700-¾)
CIRCLING	1220-1	611 (700-1)	1300-2	1300-2¼
			691 (700-2)	691 (700-2¼)
FIPR FIX MINIMUMS				
S-LOC 6	980-½	376 (400-½)	980-¾	376 (400-¾)
CIRCLING	1080-1	471 (500-1)	1300-2	1300-2¼
			691 (700-2)	691 (700-2¼)