

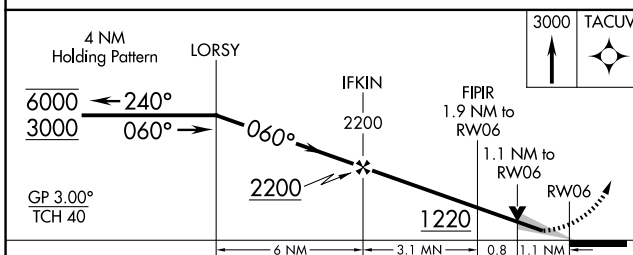
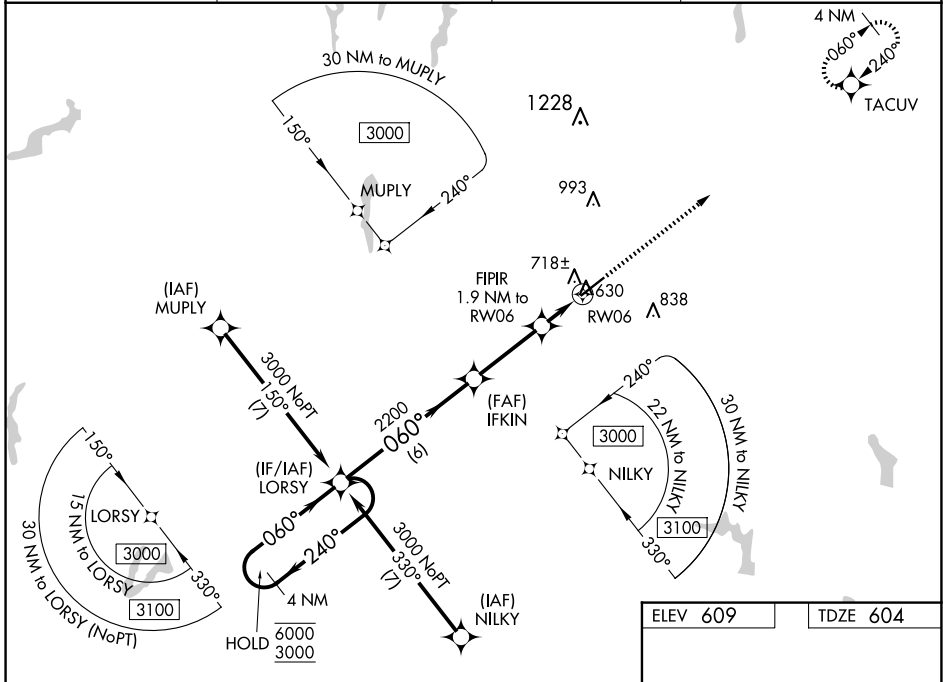
WAAS CH 86512 W06A	APP CRS 060°	Rwy Idg TDZE Apt Elev	5702 604 609
--	------------------------	-----------------------------	---

RNAV (GPS) RWY 6

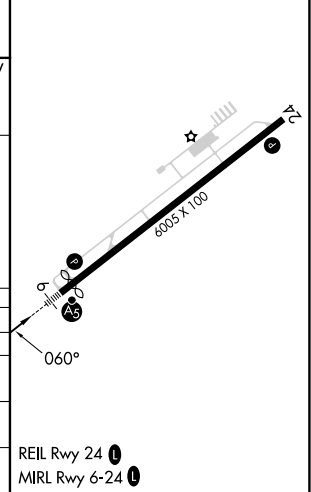
RALEIGH RGNL AT PERSON COUNTY (TDF)

RNP APCH - GPS.	MALSRS 	MISSED APPROACH: Climb to 3000 direct TACUV and hold.
<p>⚠ For uncompensated Baro-VNAV systems, LNAV/VNAV NA below -16°C or above 54°C. For inop ALS, increase LNAV/VNAV all Cats visibility to ½ SM and LNAV Cat C/D visibility to 1 SM.</p>		

AWOS-3 126.725	RALEIGH APP CON 132.35 256.9	GCO 119.7	UNICOM 122.7 (CTAF) 0
--------------------------	--	---------------------	---------------------------------



ELEV 609	TDZE 604
----------	----------



CATEGORY	A	B	C	D
LPV DA		804-½	200 (200-½)	
LNAV/VNAV DA		879-½	275 (300-1½)	
LNAV MDA	980-½	376 (400-½)	980-⅝	376 (400-⅝)
CIRCLING	1080-1	471 (500-1)	1300-2 691 (700-2)	1300-2¼ 691 (700-2¼)

SE-2, 20 FEB 2025 to 20 MAR 2025

SE-2, 20 FEB 2025 to 20 MAR 2025