

NDB CMY	APP CRS	Rwy Idg	<b>4266</b>
<b>412</b>	<b>287°</b>	TDZE	<b>831</b>
		Apt Elev	<b>838</b>

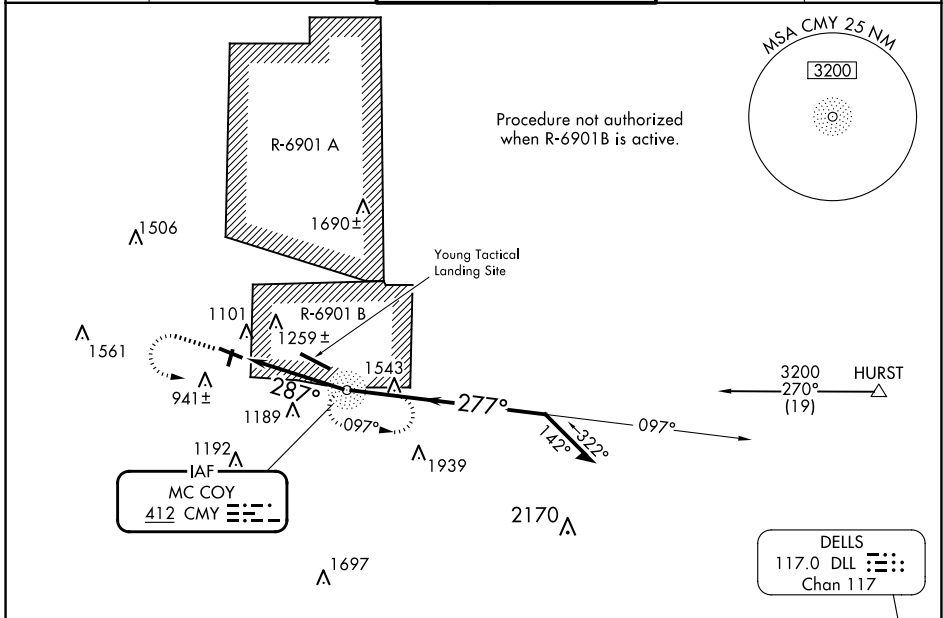
# NDB RWY 29

SPARTA/FORT MC COY (CMY)

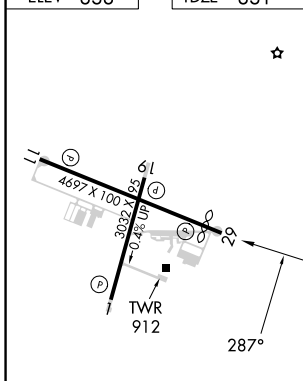
**⚠** Circling to Rwy 19 NA at night. When local altimeter setting not received, use La Crosse altimeter setting and increase all MDA 80 feet and visibility S-29 Cat B ¼ mile and Cat C ½ mile, Circling Cat B and C ¼ mile. Helicopter visibility reduction below 1 SM not authorized.

**MISSED APPROACH:** Climb to 2100 then climbing left turn to 3200 direct CMY NDB and hold.

ASOS <b>119.775</b>	VOLK APP CON ★ <b>135.25 244.875</b>	SPARTA/MC COY TOWER ★ <b>124.6 254.375</b>	GND CON <b>123.625</b>	CTAF <b>124.6 0</b>
------------------------	---	---	---------------------------	------------------------



ELEV 838	TDZE 831
----------	----------



2100	3200	CMY	CMY NDB	
VGSi and descent angles not coincident (VGSi Angle 3.00/TCH 43).				
		3.56°	TCH 40	
4.1 NM				

REIL Rwys 11 and 29				
MIRL Rwys 1-19 and 11-29				
FAF to MAP 4.1 NM				
Knots	60	90	120	150
Min:Sec	4:06	2:44	2:03	1:38
CATEGORY	A	B	C	D
S-29	1560-1	729 (800-1)	1560-2 729 (800-2)	NA
CIRCLING	1560-1	722 (800-1)	1620-2¼ 782 (800-2¼)	NA

EC-3, 20 FEB 2025 to 20 MAR 2025

EC-3, 20 FEB 2025 to 20 MAR 2025