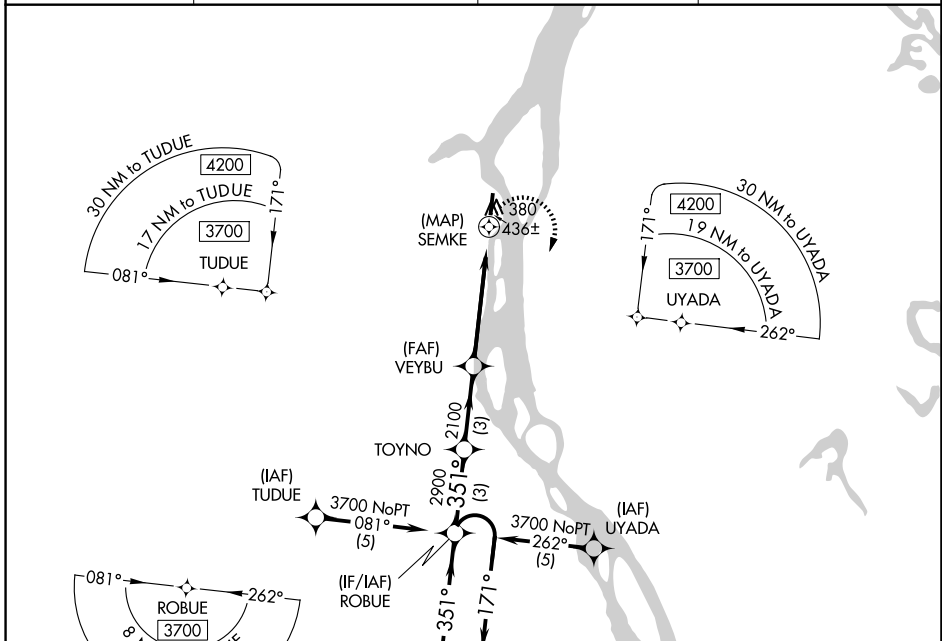


RNAV (GPS) RWY 35

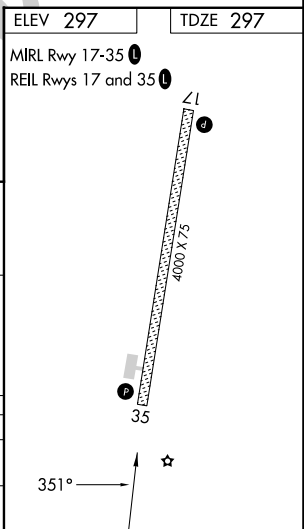
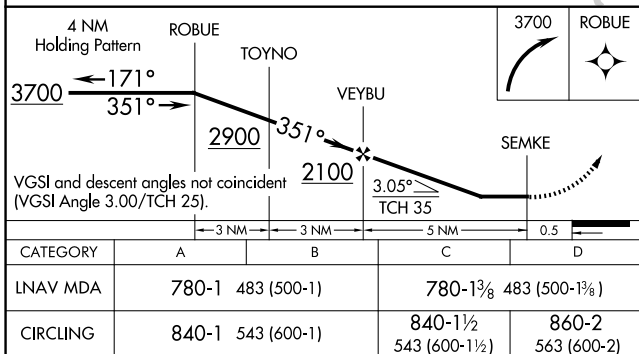
ANVIK (ANV)(PANV)

APP CRS 351°	Rwy Idg 4000
	TDZE 297
	Apt Elev 297

RNP APCH - GPS.		MISSED APPROACH: Climbing right turn to 3700 direct ROBUE and hold, continue climb-in-hold to 3700.	
AWOS-3P 133.55	ANCHORAGE CENTER 135.7 335.5	KENAI RADIO 122.4	UNICOM 122.7 (CTAF) 0



ELEV 297	TDZE 297
MRL Rwy 17-35 0	
REL Rwy 17 and 35 0	



AK, 20 FEB 2025 to 17 APR 2025

AK, 20 FEB 2025 to 17 APR 2025