

LOC I-LKU <b>108.55</b>	APP CRS <b>272°</b>	Rwy Idg TDZE Apt Elev	<b>4300</b> <b>494</b> <b>494</b>
----------------------------	------------------------	-----------------------------	-----------------------------------------

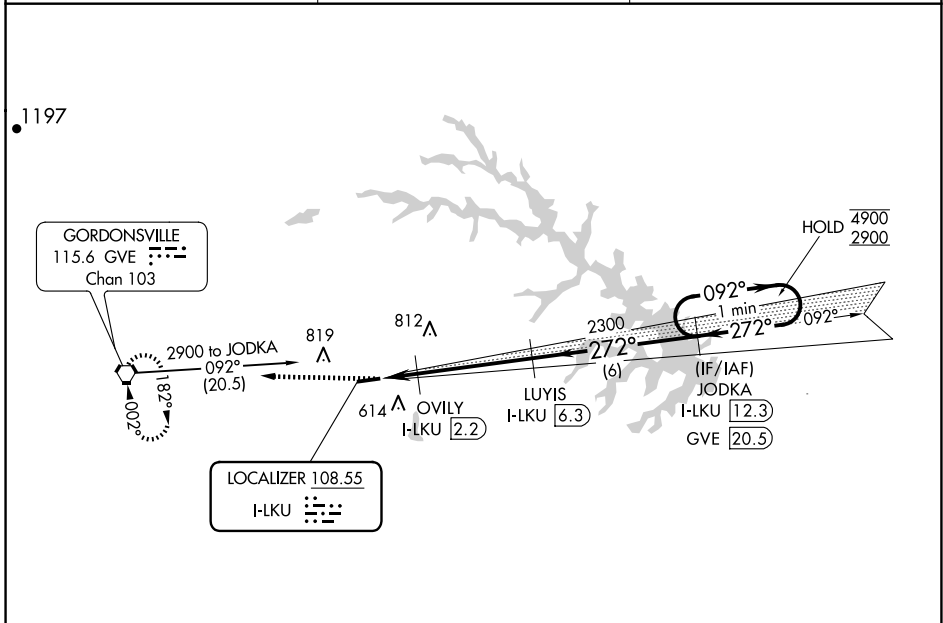
**LOC RWY 27**  
LOUISA COUNTY/FREEMAN FLD (LKU)

DME required.

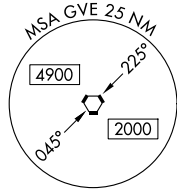
**NA** Circling NA north of Rwy 9-27. When local altimeter setting not received, use Orange altimeter setting and increase all MDA 40 feet. VDP NA when using Orange altimeter setting.

**MISSED APPROACH:**  
Climb to 2900 direct  
GVE VORTAC and hold.

AWOS-3 <b>119.475</b>	POTOMAC APP CON <b>132.85 323.125</b>	UNICOM <b>122.975 (CTAF) 0</b>
--------------------------	------------------------------------------	-----------------------------------



ELEV 494	TDZE 494
----------	----------



↑	2900	GVE	OVILY I-LKU [2.2]	LUYIS I-LKU [6.3]	JODKA I-LKU [12.3]	One Minute Holding Pattern
			I-LKU [0.8]	I-LKU [1.7]	2300	272° ← 272° → 4900 / 2900
			980	≤ 3.00° TCH 40		
			0.9 NM	0.5 NM	4.2 NM	6 NM
CATEGORY	A	B	C	D		
S-LOC 27	820-1	326 (400-1)	NA	NA		
CIRCLING	900-1 406 (500-1)	960-1 466 (500-1)	NA	NA		

NE-3, 20 FEB 2025 to 20 MAR 2025

NE-3, 20 FEB 2025 to 20 MAR 2025