

SW-4, 20 FEB 2025 to 20 MAR 2025

ATIS  
119.425  
GND CON  
118.0  
GLENDALE TOWER \*  
121.0  
LUKE DEP CON \*  
118.15 363.125  
PHOENIX DEP CON  
120.7 239.0

NOTE: RNAV 1.  
NOTE: Turbojets and turboprops only.  
NOTE: RADAR required.  
NOTE: GPS required.  
NOTE: ABQ transition ATC assigned only.  
NOTE: Aircraft filing over ACH, LBL, ONM, CNX, PNH, MMB, TCC, IRW and TXO file FTHLS DEPARTURE.  
NOTE: Aircraft filing over ABQ, CIM, FTI, and GCK file LALUZ DEPARTURE.  
NOTE: Aircraft filing over DEN, RSK, ALS, and points north of ALS file YOTES DEPARTURE.  
NOTE: Aircraft departing KGEU and KGYR ATC assigned only.

TAKEOFF MINIMUMS  
Rwys 1, 19: Standard.

TOP ALTITUDE:  
ASSIGNED BY ATC

ALBUQUERQUE  
ABQ

FL180  
\*11500  
(71)  
\*044°

FL180  
\*11700  
(65)

FL180  
\*11700  
(65)

FL180  
\*11700  
(65)

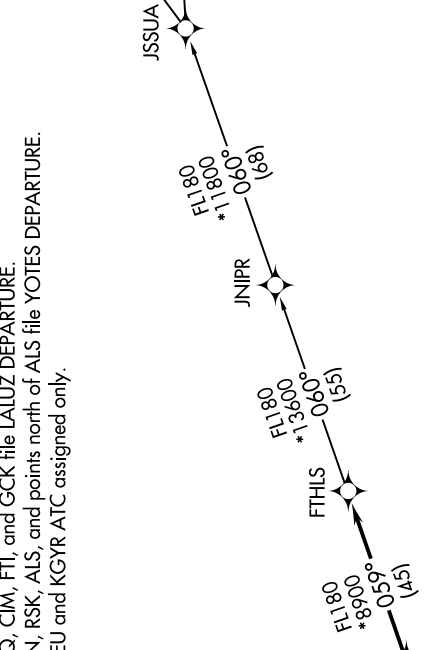
FL180  
\*11700  
(65)

FL180  
\*11700  
(65)

FL180  
\*11700  
(65)

FL180  
\*11700  
(65)

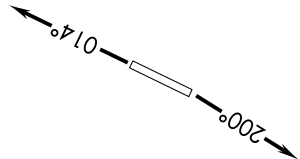
FL180  
\*11700  
(65)



DEPARTURE ROUTE DESCRIPTION

TAKEOFF RUNWAY 1: Climb heading 014° or as assigned by ATC, thence. . . .  
 TAKEOFF RUNWAY 19: Climb heading 200° or as assigned by ATC, thence. . . .  
 . . . expect RADAR vectors to BROAK, then on track 059° to FTHLS, then on (transition).  
 Maintain ATC assigned altitude, expect filed altitude 3 minutes after departure.

- ALBUQUERQUE TRANSITION (FTHLS6.ABQ)
- JNIPR TRANSITION (FTHLS6.JNIPR)
- MAXXO TRANSITION (FTHLS6.MAXXO)



NOTE: Chart not to scale.

SW-4, 20 FEB 2025 to 20 MAR 2025