

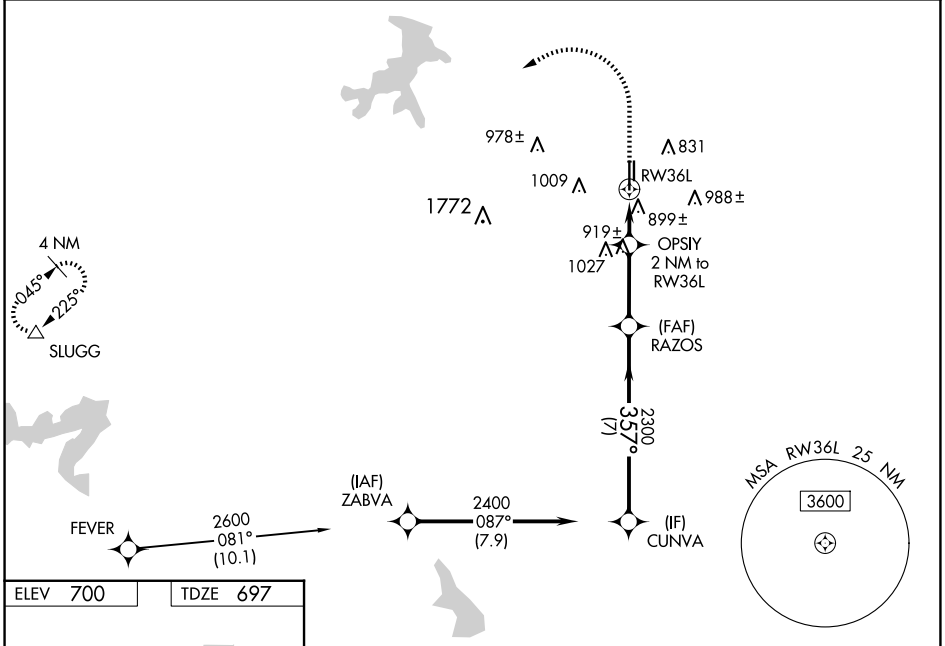
WAAS CH 57999 W36A	APP CRS 357°	Rwy Idg TDZE Apt Elev	6002 697 700
--	------------------------	-----------------------------	---

RNAV (GPS) RWY 36L

FORT WORTH SPINKS (FWS)

RNP APCH - GPS.		MALSR	MISSED APPROACH: Climb to 1400 then climbing left turn to 3100 direct SLUGG and hold.
<p>⚠ Circling NA west of Rwy 18R-36L. For uncompensated Baro-VNAV systems, LNAV/VNAV NA below -16°C or above 54°C. For inop ALS, increase LNAV/VNAV all Cats visibility to 1½ SM and increase LNAV Cats C/D visibility to 1¾ SM.</p>			

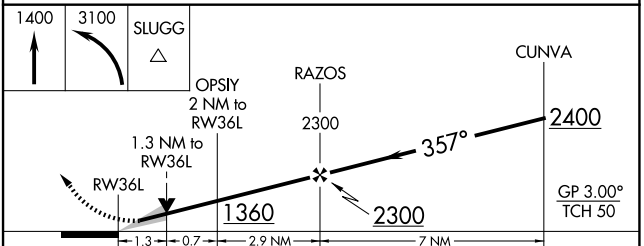
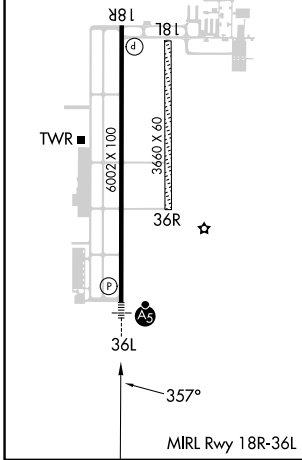
ATIS 120.025	LONE STAR APP CON 135.975 379.9	SPINKS TOWER ★ 124.625 (CTAF)	GND CON 119.475	UNICOM 122.7
------------------------	---	---	---------------------------	------------------------



SC-2, 20 FEB 2025 to 20 MAR 2025

SC-2, 20 FEB 2025 to 20 MAR 2025

ELEV 700	TDZE 697
----------	----------



	A	B	C	D
CATEGORY	A	B	C	D
LPV DA	897-½	200 (200-½)		
LNAV/VNAV DA	1193-1	496 (500-1)		
LNAV MDA	1160-½	463 (500-½)	1160-1	463 (500-1)
CIRCLING	1200-1	500 (500-1)	1340-1¾ 640 (700-1¾)	1340-2 640 (700-2)