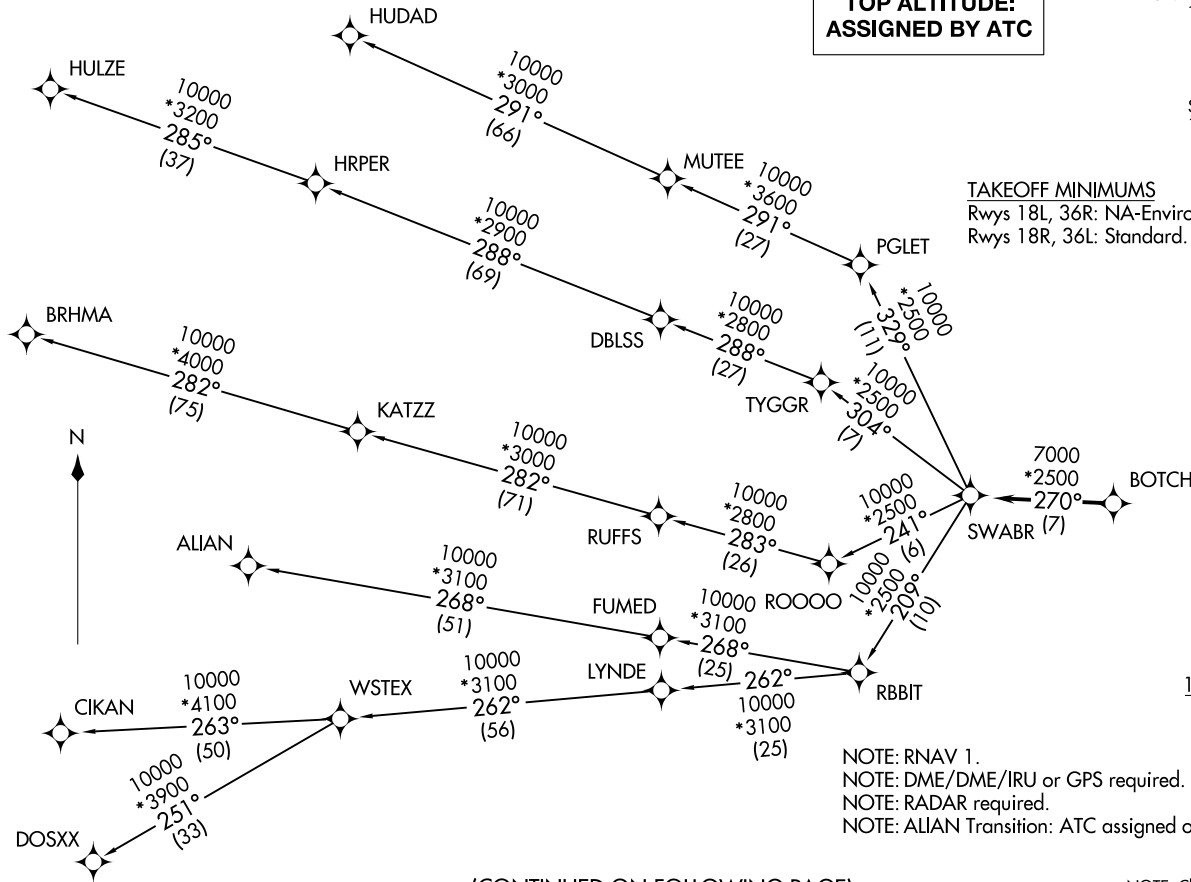


**TOP ALTITUDE:
ASSIGNED BY ATC**

LONE STAR DEP CON
135.975 379.9
ATIS
120.025
GND CON
119.475
SPINKS TOWER ★
124.625 (CTAF)

TAKEOFF MINIMUMS
Rwys 18L, 36R: NA-Environmental.
Rwys 18R, 36L: Standard.



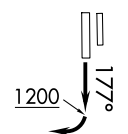
(SWABR) .SWABR) 24305
SWABR ONE DEPARTURE (RNAV)

AL-6917 (FAA)

FORT WORTH SPINKS (FWS)
FORT WORTH, TEXAS

SWABR ONE DEPARTURE (RNAV)
(SWABR) .SWABR) 24MAR22

FORT WORTH, TEXAS
FORT WORTH SPINKS (FWS)



NOTE: RNAV 1.
NOTE: DME/DME/IRU or GPS required.
NOTE: RADAR required.
NOTE: ALIAN Transition: ATC assigned only.

NOTE: Chart not to scale.

(CONTINUED ON FOLLOWING PAGE)

SWABR ONE DEPARTURE (RNAV)



DEPARTURE ROUTE DESCRIPTION

TAKEOFF RUNWAY 18R: Climb on heading 177° to 1200 before turning right.

When entering controlled airspace, fly heading assigned by ATC, expect vectors to BOTCH, then on track 270° to SWABR, then on assigned transition. Maintain ATC assigned altitude, expect filed altitude 10 minutes after departure.

ALIAN TRANSITION (SWABR1.ALIAN)

BRHMA TRANSITION (SWABR1.BRHMA)

CIKAN TRANSITION (SWABR1.CIKAN)

DOSXX TRANSITION (SWABR1.DOSXX)

HUDAD TRANSITION (SWABR1.HUDAD)

HULZE TRANSITION (SWABR1.HULZE)

WSTEX TRANSITION (SWABR1.WSTEX)

SC-2, 20 FEB 2025 to 20 MAR 2025

SC-2, 20 FEB 2025 to 20 MAR 2025