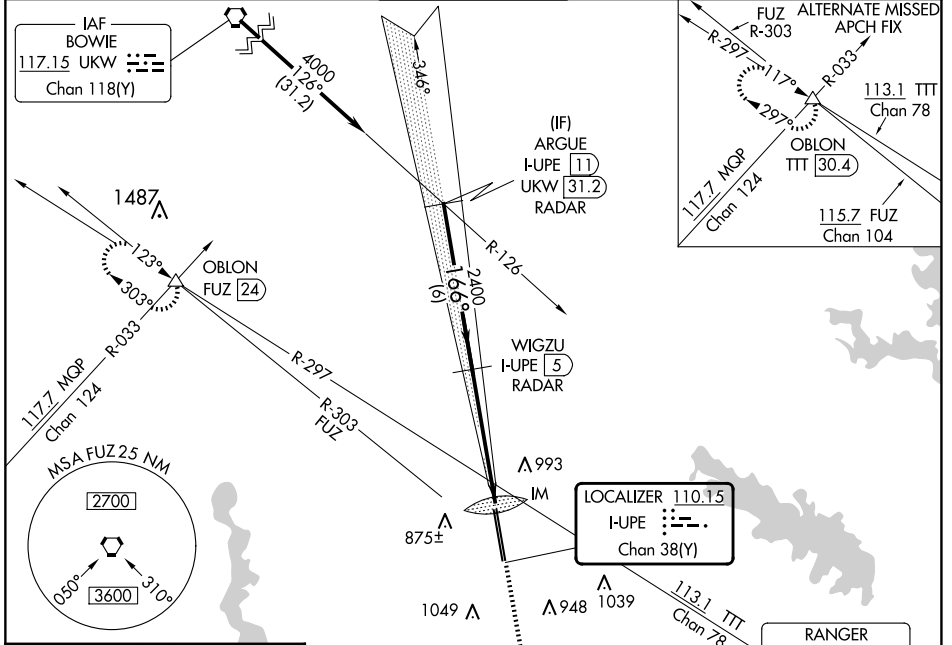


LOC/DME I-UIPE 110.15 Chan 38 (Y)	APP CRS 166°	Rwy Idg 10600 TDZE 723 Apt Elev 723
---	------------------------	--

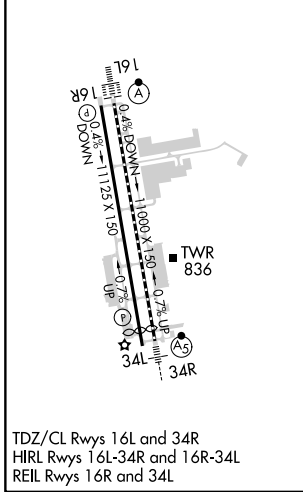
ILS RWY 16L (CAT II & III)
PEROT FLD/FORT WORTH ALLIANCE (AFW)

DME or RADAR required.	ALSIF-2 	MISSED APPROACH: Climb to 1200 then climbing right turn to 3000 on heading 330° and FUZ VORTAC R-303 to OBLON INT/FUZ 24 DME and hold.
------------------------	-------------	--

ATIS 126.925	LONE STAR APP CON 118.1 306.95	ALLIANCE TOWER 135.15 257.9	GND CON 132.65 306.2	CLNC DEL 128.725
------------------------	--	---------------------------------------	--------------------------------	----------------------------



ELEV 723	D	TDZE 723
----------	----------	----------



ARGUE I-UIPE 11 RADAR	WIGZU I-UIPE 5 RADAR	1200	3000	FUZ R-303	OBLON
4000	2400	↑	hdg 330°		△
GS 3.00° TCH 55	2400				
	6 NM				1049'
CATEGORY	A	B	C	D	
S-ILS 16L	CAT II RA 101/12		100 DA 823		
S-ILS 16L	CAT III		RVR 06		

CATEGORY II & III ILS - SPECIAL AIRCREW & AIRCRAFT CERTIFICATION REQUIRED

SC-2, 20 FEB 2025 to 20 MAR 2025

SC-2, 20 FEB 2025 to 20 MAR 2025