

TRUUK TWO ARRIVAL (RNAV)

DALLAS-FORT WORTH, TEXAS

LONE STAR APP CON
 124.3 282.275
 AFW ATIS
 126.925
 DTO ATIS
 119.325
 FTW ATIS
 120.7
 FWS ATIS
 120.025
 KNFW ATIS ★
 351.675

NOTE: RADAR required.
 NOTE: RNAV 1.
 NOTE: DME/DME/IRU or GPS required.

SASIE
 VERTICAL NAVIGATION
 PLANNING INFORMATION

TURBOJET NORTH FLOW:

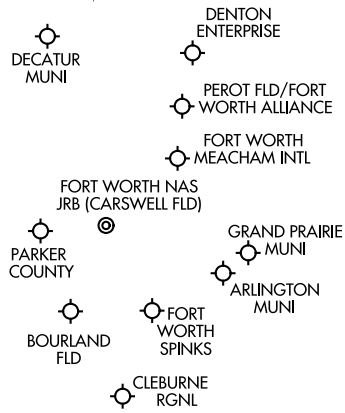
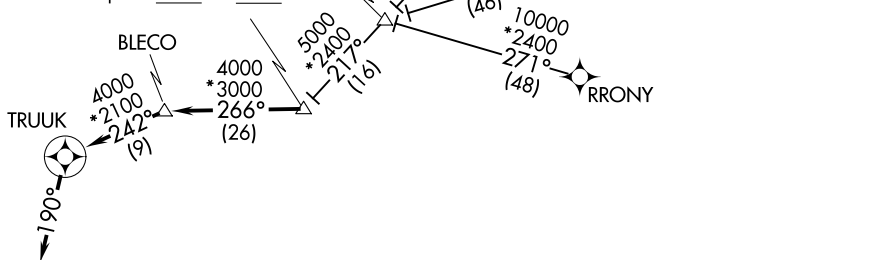
Expect 10000

TURBOJET SOUTH FLOW:

Expect 11000

PROPS:

Expect 5000 or 6000



NOTE: Chart not to scale.

ARRIVAL ROUTE DESCRIPTION

AXxee TRANSITION (AXxee.TRUUK2): (For aircraft filing FL230 and below).

HITUG TRANSITION (HITUG.TRUUK2)

PONY TRANSITION (PONY.TRUUK2)

RRNET TRANSITION (RRNET.TRUUK2)

RRONY TRANSITION (RRONY.TRUUK2): (For aircraft filing FL230 and below).

From SASIE on track 266° to BLECO, then on track 242° to TRUUK, then on track 190°. Expect RADAR vectors to final approach course.

SC-2, 20 FEB 2025 to 20 MAR 2025

SC-2, 20 FEB 2025 to 20 MAR 2025