

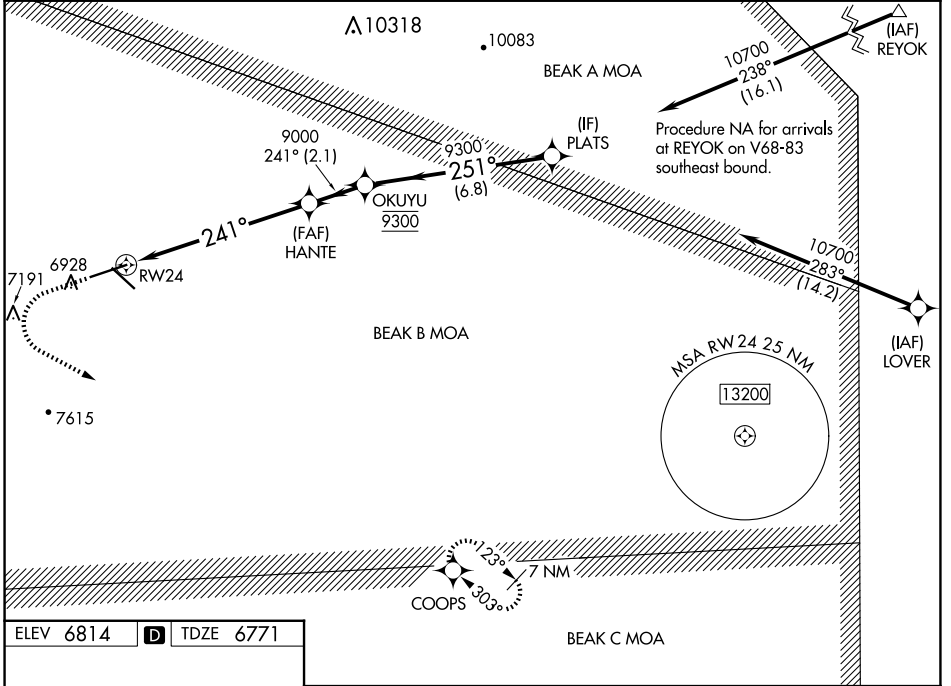
WAAS CH 53420 W24A	APP CRS 241°	Rwy ldg TDZE Apt Elev	8120 6771 6814
--	------------------------	-----------------------------	---

RNAV (GPS) RWY 24

SIERRA BLANCA RGNL (S.R.R.)

RNP APCH - GPS.	MISSED APPROACH: Climb to 7500 then climbing left turn to 10000 direct COOPS and hold.
<p>▼ When local altimeter setting not received, procedure NA.</p> <p>⚠ For uncompensated Baro-VNAV systems, LNAV/VNAV NA below -28°C or above 54°C. Circling Rwy 12 NA at night.</p>	

AWOS-3 126.475	ALBUQUERQUE CENTER 132.65 257.6	UNICOM 122.8 (CTAF) 0
--------------------------	---	---------------------------------



ELEV 6814	D	TDZE 6771
-----------	----------	-----------

	7500	10000	COOPS	
	↑	↶	✦	
<p>241°</p> <p>1.9 NM to RW24</p> <p>1.9 NM 5.1 NM 2.1 NM 6.8 NM</p> <p>HANTE 9000 OKUYU 9300 PLATS 10700</p> <p>9000 9300</p> <p>GP 3.00° TCH 51</p>				
CATEGORY	A	B	C	D
LPV DA		6971- ³ / ₄	200 (200- ³ / ₄)	
LNAV/VNAV DA		7220-1 ³ / ₈	449 (500-1 ³ / ₈)	
LNAV MDA	7380-1	609 (600-1)	7380-1 ³ / ₄	609 (600-1 ³ / ₄)
CIRCLING	7380-1	566 (600-1)	7600-2 ¹ / ₄ 786 (800-2 ¹ / ₄)	7860-3 1046 (1100-3)

SW-1, 20 FEB 2025 to 20 MAR 2025

SW-1, 20 FEB 2025 to 20 MAR 2025