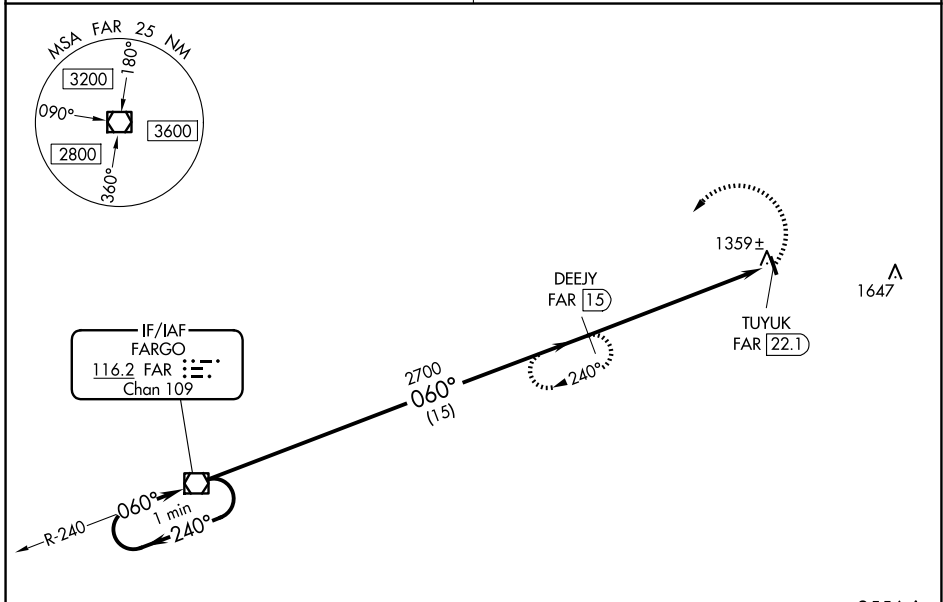


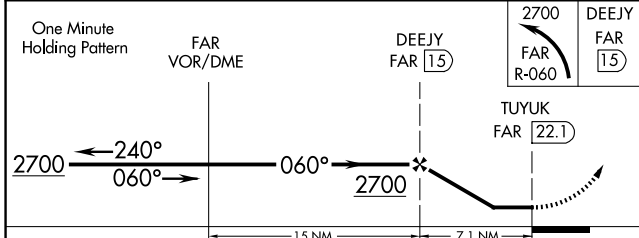
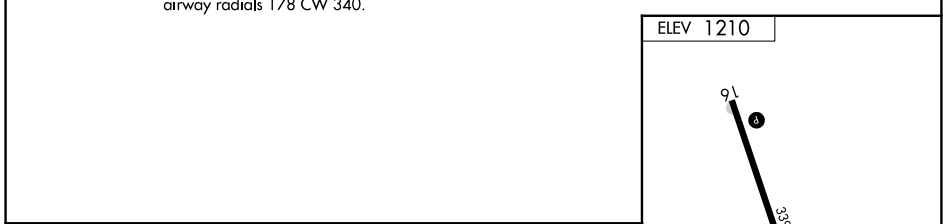
VOR/DME FAR 116.2 Chan 109	APP CRS 060°	Rwy Idg TDZE Apt Elev N/A N/A 1210
--	------------------------	--

VOR/DME-A
HAWLEY MUNI (04Y)

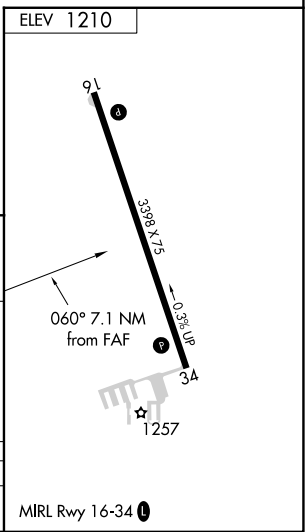
<p>▼ Use Fargo, ND altimeter setting. ▲ NA</p>	<p>MISSED APPROACH: Climbing left turn to 2700 via FAR VOR/DME R-060 to DEEJY/15 DME and hold.</p>
<p>FARGO APP CON 120.4 377.15</p>	<p>UNICOM 122.8 (CTAF)</p>



NoPT for arrival on FAR VOR/DME airway radials 178 CW 340.



CATEGORY	A	B	C	D
CIRCLING	1760-1 550 (600-1)	1760-1¼ 550 (600-1¼)	1980-2¼ 770 (800-2¼)	NA



NC-1, 20 FEB 2025 to 20 MAR 2025

NC-1, 20 FEB 2025 to 20 MAR 2025