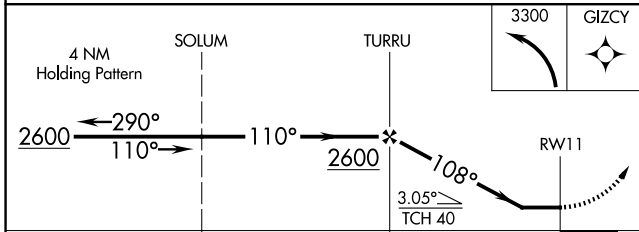
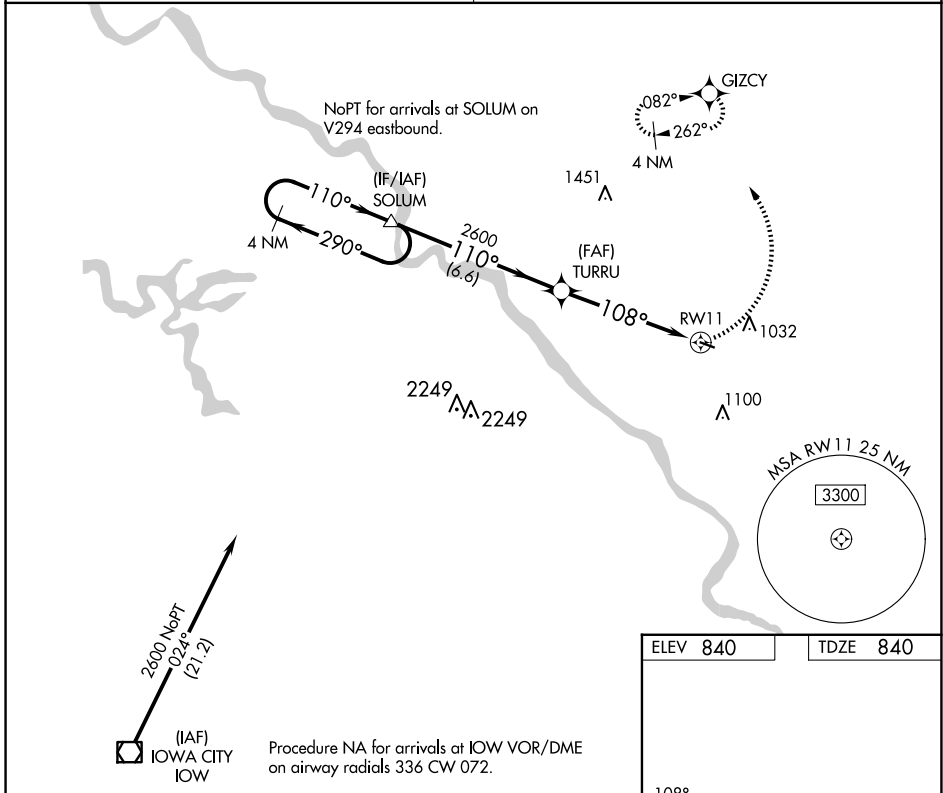


APP CRS	Rwy Idg	<b>3000</b>
<b>108°</b>	TDZE	<b>840</b>
	Apt Elev	<b>840</b>

# RNAV (GPS) RWY 11

MATHEWS MEML (8C4)

<p><b>NA</b> DME/DME RNP-0.3 NA. Visibility reduction by helicopters NA. Use Iowa City altimeter setting, when not received use Cedar Rapids altimeter setting.</p>	<p>MISSED APPROACH: Climbing left turn to 3300 direct GIZCY and hold.</p>
<p>CEDAR RAPIDS APP CON ★ <b>119.7 266.8</b></p>	<p>CTAF <b>122.9</b></p>



CATEGORY	A	B	C	D
LNVA MDA	1360-1	520 (600-1)		NA
CIRCLING	1460-1	620 (700-1)		NA

ELEV 840	TDZE 840
----------	----------

MIRL Rwy 11-29

REIL Rwy 11

NC-3, 20 FEB 2025 to 20 MAR 2025

NC-3, 20 FEB 2025 to 20 MAR 2025