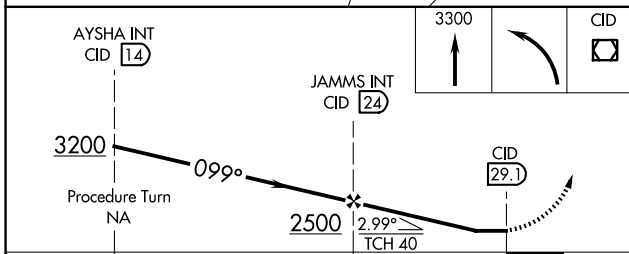
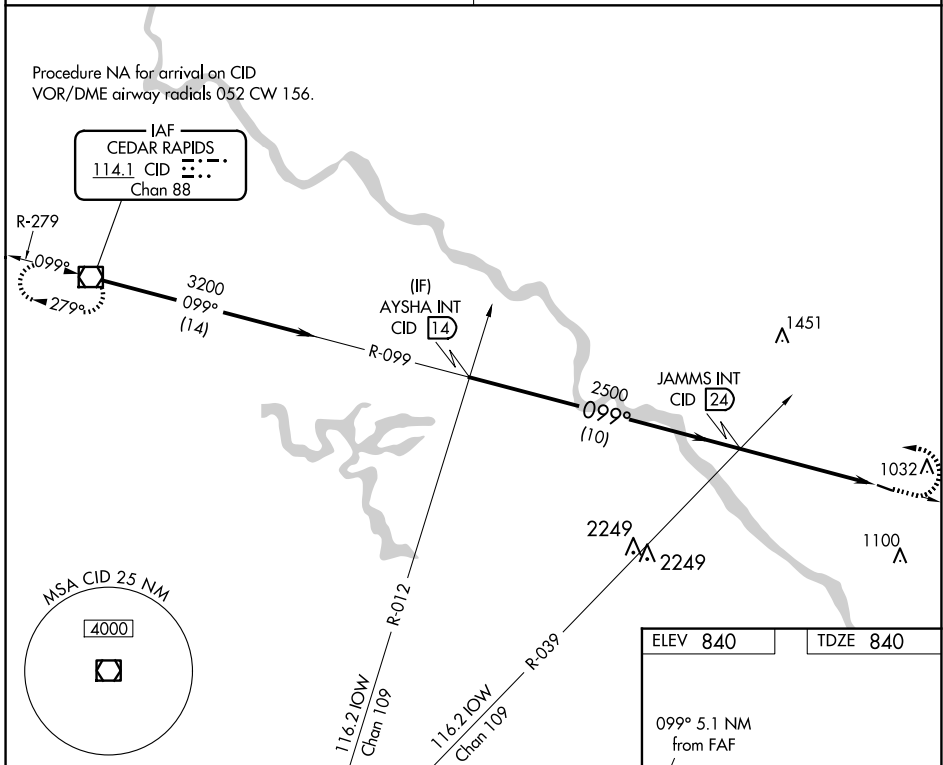


VOR/DME CID 114.1 Chan 88	APP CRS 099°	Rwy Idg 3000 TDZE 840 Apt Elev 840
---	------------------------	---

VOR RWY 11

MATHEWS MEML (8C4)

<p>▼ Use Iowa City altimeter setting, when not received</p> <p>▲ NA use Cedar Rapids altimeter setting.</p>	<p>MISSED APPROACH: Climb to 3300 then left turn direct CID VOR/DME and hold.</p>
<p>CEDAR RAPIDS APP CON ★</p> <p>119.7 266.8</p>	<p>CTAF</p> <p>122.9</p>



ELEV 840	TDZE 840
099° 5.1 NM from FAF	
3000 X 60	
MIRL Rwy 11-29 REIL Rwy 11	
FAF to MAP 5.1 NM	
Knots	60 90 120 150 180
Min:Sec	5:06 3:24 2:33 2:02 1:42

CATEGORY	A	B	C	D
S-11	1400-1 560 (600-1)	1400-1¼ 560 (600-1¼)		NA
CIRCLING	1460-1 620 (700-1)	1460-1¼ 620 (700-1¼)		NA

NC-3, 20 FEB 2025 to 20 MAR 2025

NC-3, 20 FEB 2025 to 20 MAR 2025