

APP CRS	Rwy Idg	3707
174°	TDZE	1561
	Apt Elev	1561

RNAV (GPS) RWY 17

ARLEDGE FLD (F56)

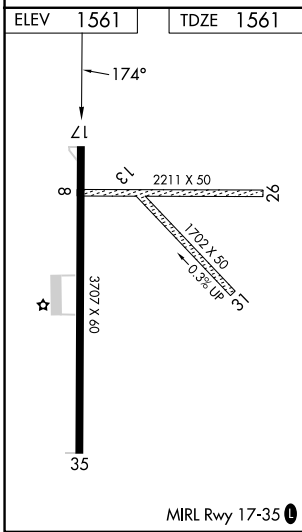
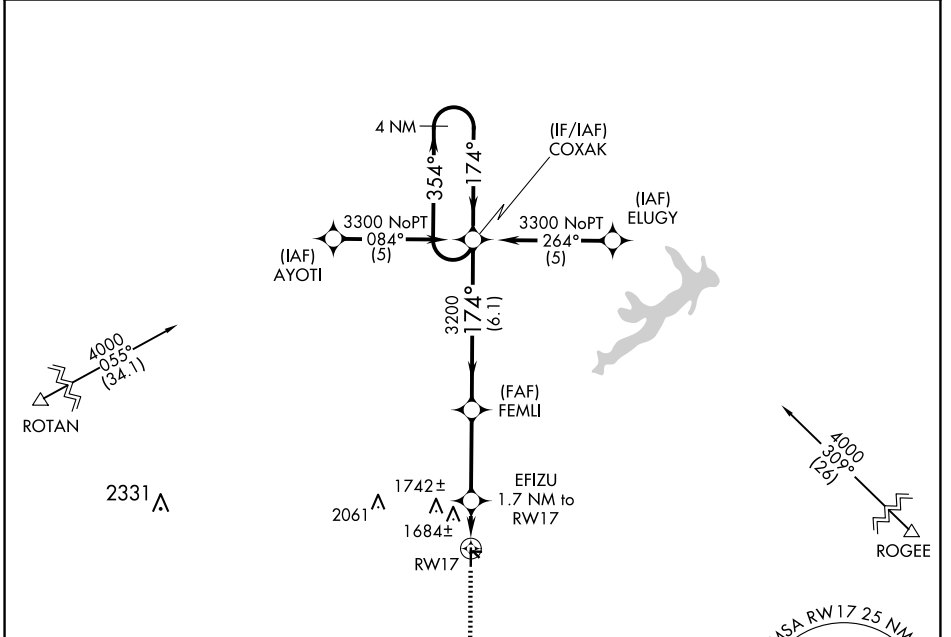
RNP APCH-GPS.

Procedure NA at night. Use Abilene Rgnl altimeter setting; when not received use Breckenridge altimeter setting and increase all MDAs 40 feet. Rwy 17 helicopter visibility reduction below

NA 1 SM NA. Circling NA to Rws 8/26 and 13/31.

MISSED APPROACH:
Climb to 3300
direct HINTA and hold.

ABILENE APP CON	UNICOM
127.2 282.3	122.8 (CTAF) 0



MISSED APCH FIX	HINTA	FEMLI	COXAK	4 NM Holding Pattern
HINTA 354° 174° 4 NM	EFIZU 1.7 NM to RWY 17 3.04° TCH 40	3200	3300	3300
3300	2120	3200	3300	3300
1.7 NM	3.3 NM	6.1 NM		
CATEGORY	A	B	C	D
LNAV MDA	2040-1	479 (500-1)	2040-1 3/8 479 (500-1 3/8)	NA
CIRCLING	2100-1 539 (600-1)	2200-1 639 (700-1)	2220-1 3/4 659 (700-1 3/4)	NA

SC-2, 20 FEB 2025 to 20 MAR 2025

SC-2, 20 FEB 2025 to 20 MAR 2025