

WAAS CH <b>82517</b> <b>W12A</b>	APP CRS <b>120°</b>	Rwy Idg <b>4501</b> TDZE <b>413</b> Apt Elev <b>425</b>
----------------------------------------	------------------------	---------------------------------------------------------------

# RNAV (GPS) RWY 12

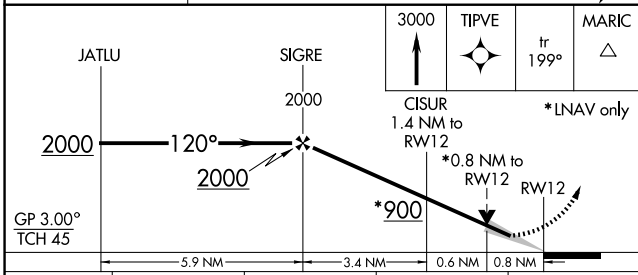
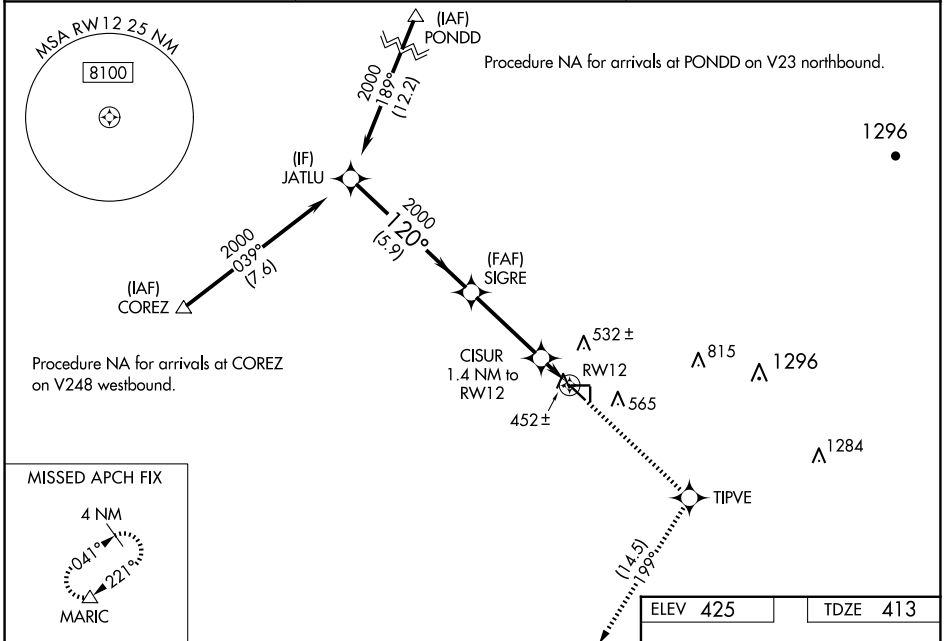
SHAFTER-MINTER FLD (MIT)

**NA** Baro-VNAV NA when using Bakersfield altimeter setting. For uncompensated Baro-VNAV systems, LNAV/VNAV NA below -15°C (5°F) or above 54°C (130°F). When local altimeter setting not received, use Bakersfield altimeter setting and increase LPV and LNAV/VNAV DA to 694 feet and LNAV/VNAV visibility to 7/8 all Cats; increase all MDA 40 feet. DME/DME RNP-0.3 NA.

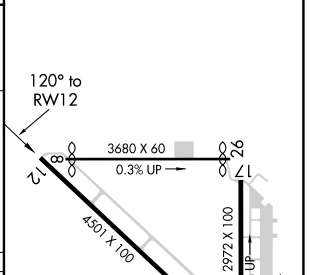
Night Landing Rwy 17, 35, 8, 26 NA.

MISSED APPROACH: Climb to 3000 direct TIPVE and on track 199° to MARIC and hold.

AWOS-3 <b>121.125</b>	BAKERSFIELD APP CON ★ <b>126.45 270.3</b>	CTAF <b>122.9</b>
--------------------------	----------------------------------------------	----------------------



ELEV 425	TDZE 413
----------	----------



CATEGORY	A	B	C	D
LPV DA		663-3/4 250 (300-3/4)		NA
LNAV/VNAV DA		663-3/4 250 (300-3/4)		NA
LNAV MDA		740-1 327 (300-1)		NA
CIRCLING	900-1	475 (500-1)	940-1 1/2 515 (600-1 1/2)	NA

MIRL Rwy 12-30

REIL Rws 12 and 30

SW-3, 20 FEB 2025 to 20 MAR 2025

SW-3, 20 FEB 2025 to 20 MAR 2025