

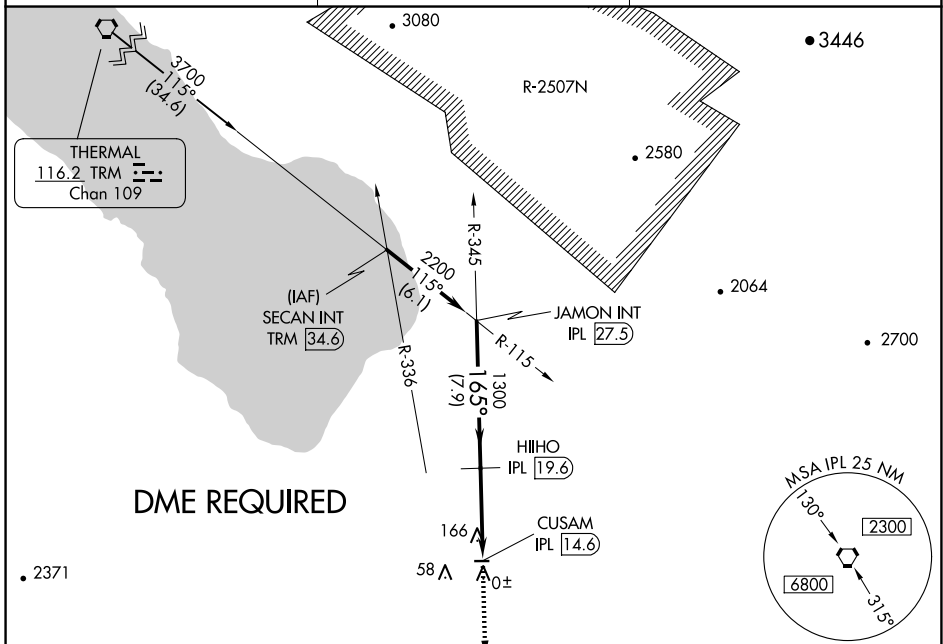
VORTAC IPL 115.9 Chan 106	APP CRS 165°	Rwy Idg TDZE Apt Elev	N/A N/A -129
-----------------------------------------------	------------------------	-----------------------------	-----------------------------------------

VOR-B
BRAWLEY MUNI (BWC)

▼ Use Imperial County altimeter setting.
▲ NA DME Required.
Circling Rwy 8 NA at night.

MISSED APPROACH: Climb to 3000 direct IPL VORTAC and hold.

IPL ASOS 132.175	YUMA CERAP 128.55 292.2	CTAF 122.9
----------------------------	-----------------------------------	----------------------

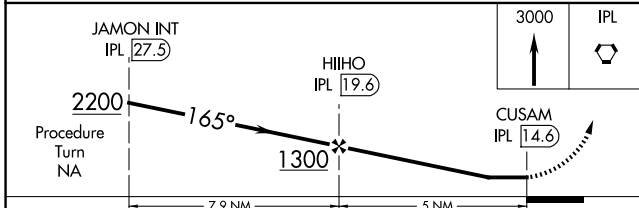
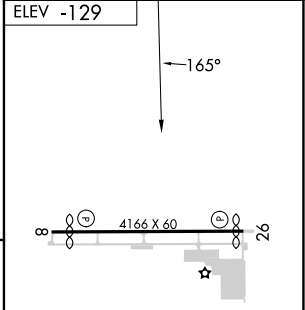


IMPERIAL
115.9 IPL
Chan 106

074°

254° R-074

ELEV -129



CATEGORY	A	B	C	D
CIRCLING	560-1	689 (700-1)		NA

REIL Rwys 8 and 26

MIRL Rwy 8-26

SW-3, 20 FEB 2025 to 20 MAR 2025

SW-3, 20 FEB 2025 to 20 MAR 2025