

VORTAC CWK 112.8 Chan 75	APP CRS 194°	Rwy Idg 4000 TDZE 600 Apt Elev 600
---------------------------------------	------------------------	---

VOR RWY 17

TAYLOR MUNI (T74)

DME required.

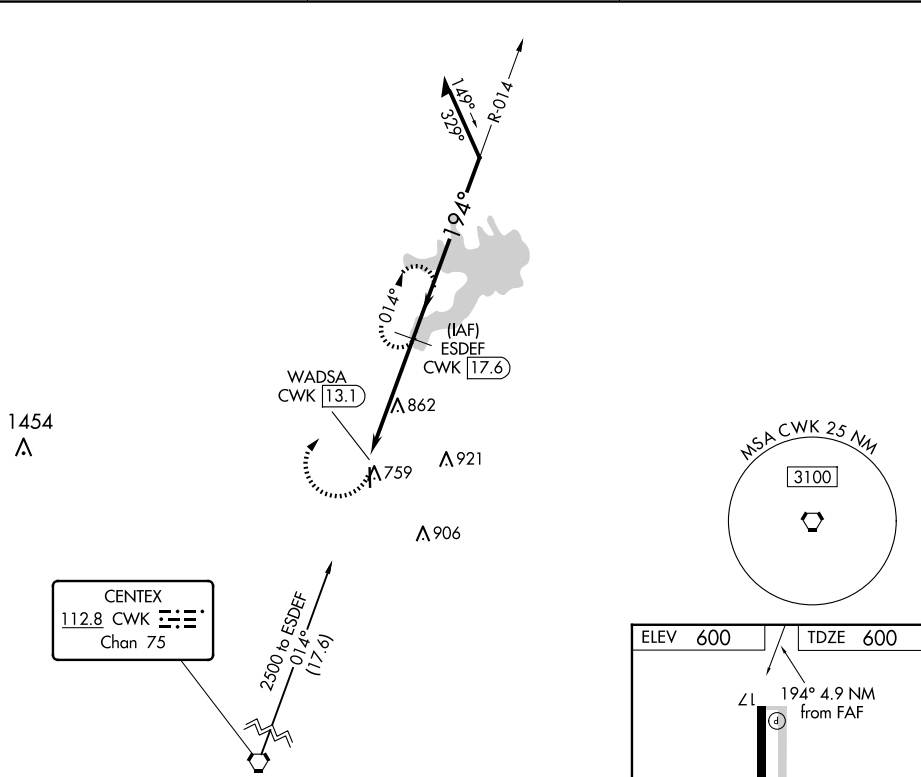
⚠ Circling Rwy 35 NA at night. Rwy 17 helicopter visibility reduction below 3/4 SM NA.
⚠ When local altimeter setting not received, use Austin Exec altimeter setting and increase all MDA 40 feet. VDP NA when using Austin Exec altimeter setting.

MISSED APPROACH: Climbing right turn to 2500 on CWK VORTAC R-014 to ESDEF/17.6 DME and hold.

AWOS-3PT
119.75

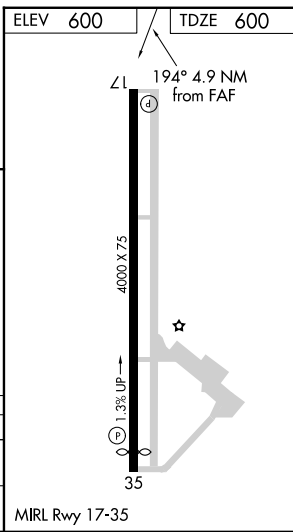
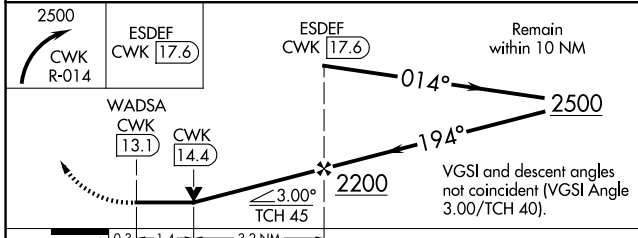
AUSTIN APP CON
127.225 317.65

UNICOM
122.8 (CTAF)



SC-3, 20 FEB 2025 to 20 MAR 2025

SC-3, 20 FEB 2025 to 20 MAR 2025



CATEGORY	A	B	C	D
S-17	1180-1	580 (600-1)		NA
C CIRCLING	1180-1	580 (600-1)		NA