

WAAS CH 78135 W18A	APP CRS 179°	Rwy Idg TDZE Apt Elev	6000 1350 1350
--	------------------------	-----------------------------	---

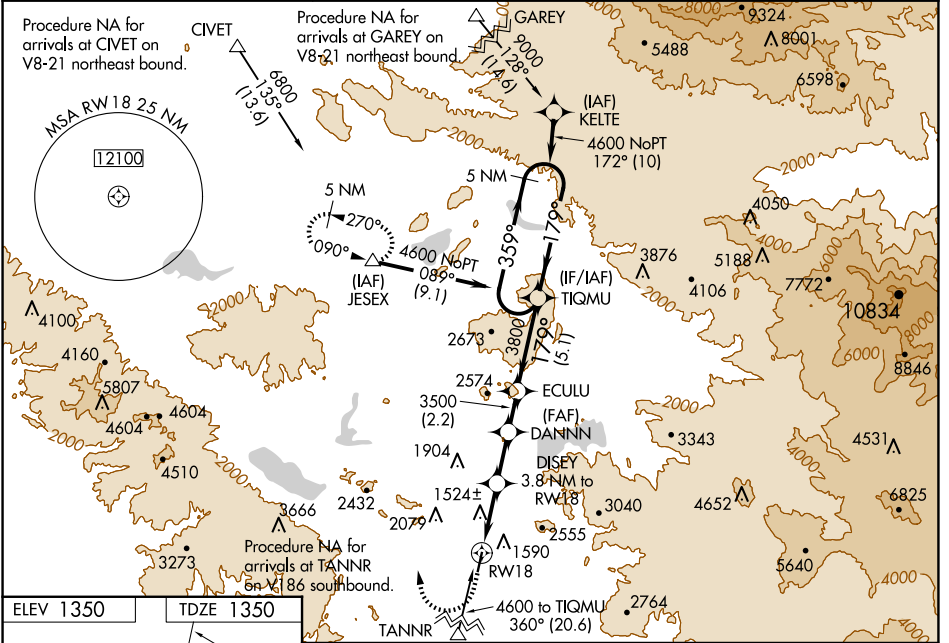
RNAV (GPS) RWY 18

FRENCH VALLEY (F70)

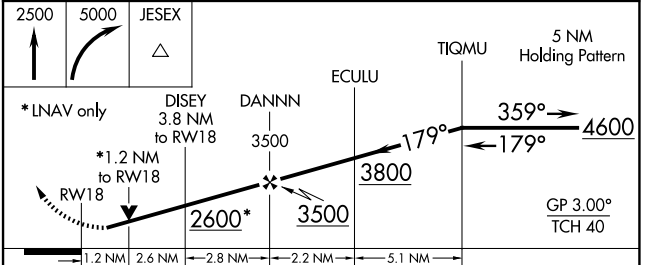
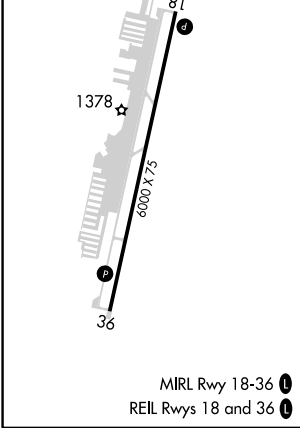
NA DME/DME RNP-0.3 NA. Baro-VNAV and VDP NA with Ramona altimeter setting. Circling NA west of Rwy 18-36. For uncompensated Baro-VNAV systems, LNAV/VNAV NA below -17°C (2°F) or above 54°C (130°F). When local altimeter setting not received use Ramona altimeter setting: increase LPV DA to 1685 feet and all visibilities ¼ mile, LNAV/VNAV DA to 1955 feet and all visibilities ¾ mile, all MDA 80 feet and LNAV visibility Cat B ¼ mile, Cat C ⅓ mile, and Circling visibility Cat C ¼ mile. Helicopter visibility reduction below ¾ SM NA.

MISSED APPROACH: Climb to 2500 then climbing right turn to 5000 direct JESEX and hold.

AWOS-3 119.025	MARCH APP CON* 133.5 306.975	UNICOM 122.8 (CTAF)
--------------------------	--	-------------------------------



ELEV 1350	TDZE 1350
-----------	-----------



CATEGORY	A	B	C	D
LPV DA	1600-7/8	250 (300-7/8)		NA
LNAV/VNAV DA	1871-13/4	521 (600-13/4)		NA
LNAV MDA	1780-1	430 (500-1)	1780-1 1/4 430 (500-1 1/4)	NA
C CIRCLING	2020-1	670 (700-1)	2060-2 710 (800-2)	NA

SW-3, 20 FEB 2025 to 20 MAR 2025

SW-3, 20 FEB 2025 to 20 MAR 2025