

APP CRS	Rwy Idg	3901
128°	TDZE	933
	Apt Elev	933

RNAV (GPS) RWY 13

CASSELTON ROBERT MILLER RGNL (5N8)

RNP APCH.

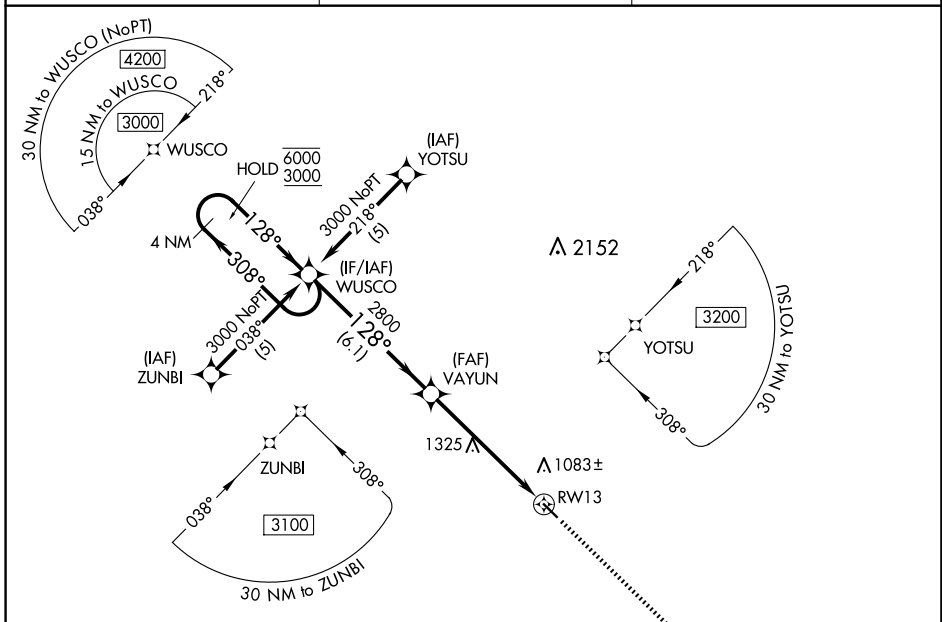
NA Rwy 13 helicopter visibility reduction below 3/4 SM NA. Use Fargo altimeter setting; when not received use Morehead altimeter setting and increase all MDA 20 feet.

MISSED APPROACH: Climb to 3000 direct JINPU and hold.

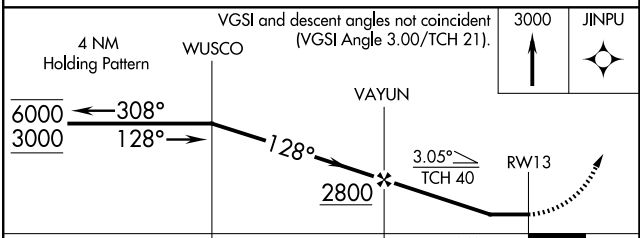
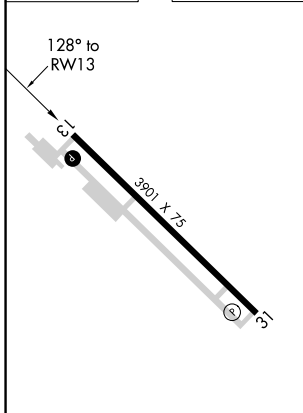
FAR ASOS
124.5 379.2

FARGO APP CON
120.4 377.15

UNICOM
122.8 (CTAF)



ELEV 933	TDZE 933
----------	----------



CATEGORY	A	B	C	D
LNAV MDA	1620-1	687 (700-1)	1620-2 687 (700-2)	NA

REIL Rwy 31 **1**
MIRL Rwy 13-31 **1**

NC-1, 20 FEB 2025 to 20 MAR 2025

NC-1, 20 FEB 2025 to 20 MAR 2025