

WAAS CH 97540 W24A	APP CRS 238°	Rwy Idg TDZE 3396 575 Apt Elev 575
--	------------------------	--

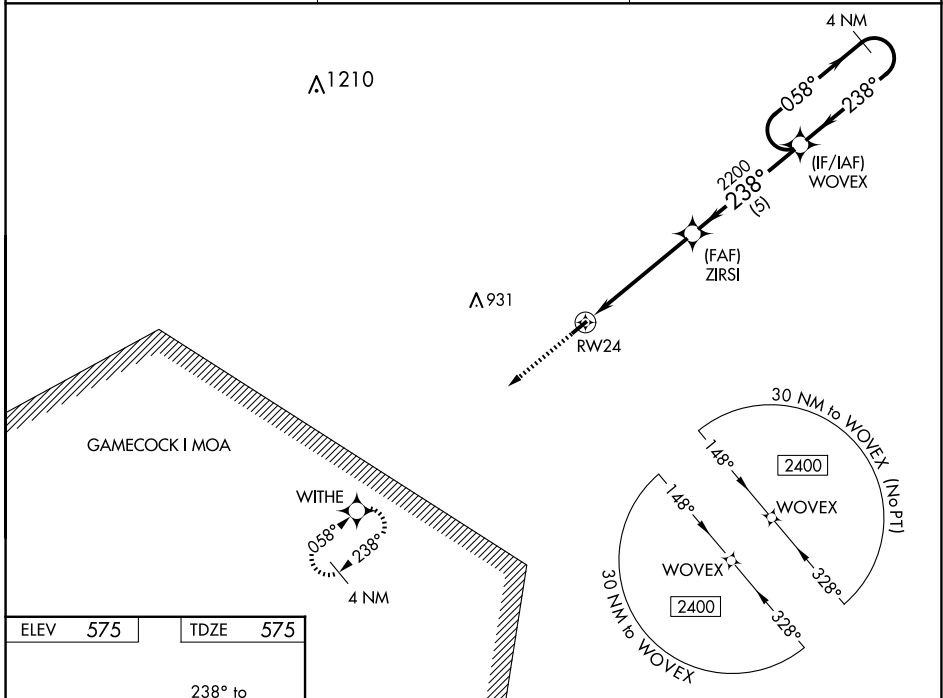
RNAV (GPS) RWY 24

PAGELAND (PYG)

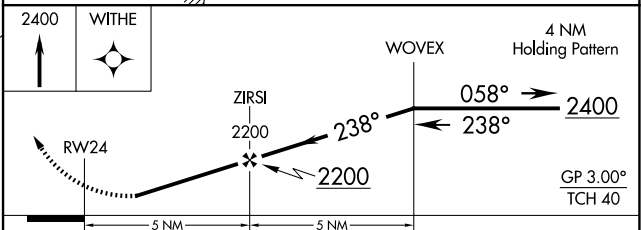
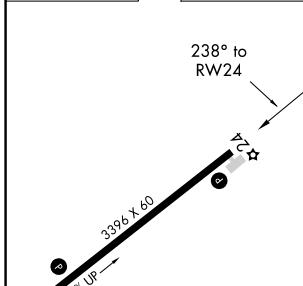
Baro-VNAV NA. Rwy 24 helicopter visibility reduction below ¾ SM NA. **DME/DME RNP-0.3 NA.** Use Charlotte/Monroe Exec altimeter setting. When Charlotte/Monroe Exec altimeter not received, use Charlotte/Douglas Intl altimeter setting and increase LPV DA to 944 feet and all visibilities ¼ SM. Increase LNAV/VNAV DA to 986 feet and all visibilities ½ SM. Increase all MDA 60 feet.

MISSED APPROACH: Climb to 2400 direct WITHE and hold.

EQY ASOS 135.775	CHARLOTTE APP CON 120.05 307.8	(CTAF) 122.9
----------------------------	--	------------------------



ELEV 575	TDZE 575
----------	----------



CATEGORY	A	B	C	D
LPV DA	890-1	315 (400-1)		NA
LNAV/VNAV DA	932-1¼	357 (400-1¼)		NA
LNAV MDA	1040-1	465 (500-1)		NA
C CIRCLING	1100-1	525 (600-1)		NA

MIRL Rwy 6-24
REIL Rws 6 and 24

SE-2, 20 FEB 2025 to 20 MAR 2025

SE-2, 20 FEB 2025 to 20 MAR 2025