

WAAS CH 82636 W17A	APP CRS 174°	Rwy ldg TDZE 1436 Apt Elev 1437
--	------------------------	---

RNAV (GPS) RWY 17

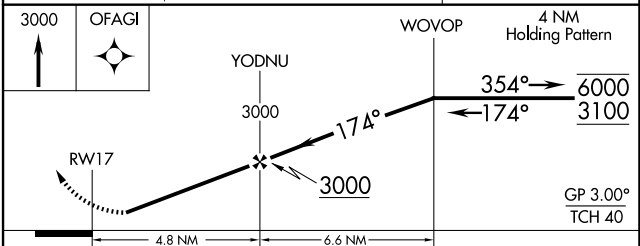
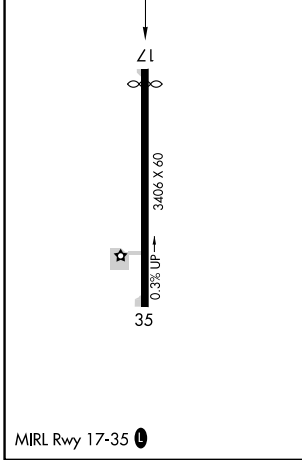
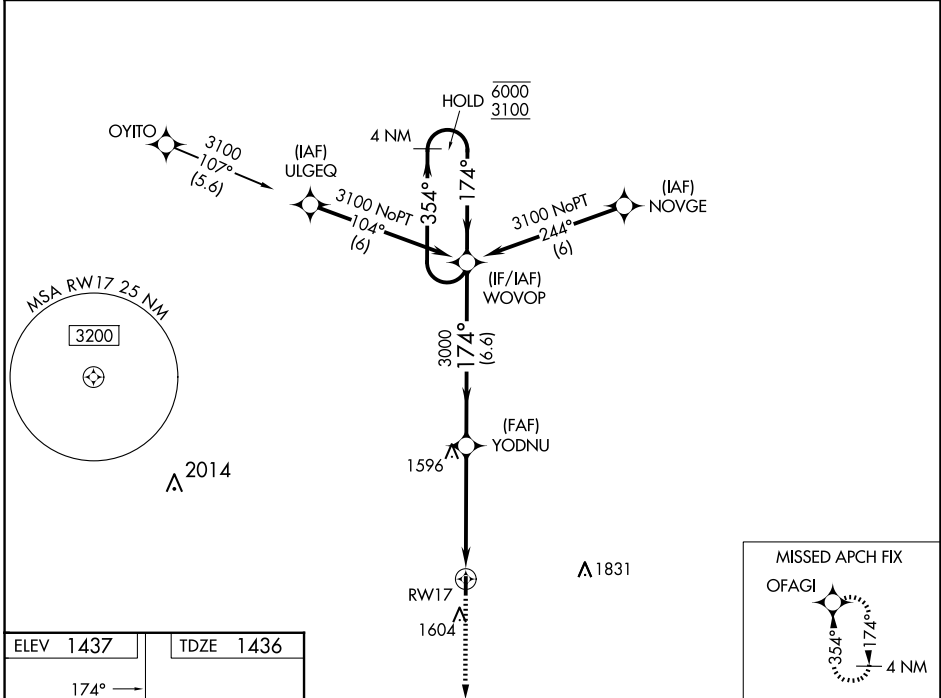
WASHINGTON COUNTY VETERAN'S MEML (K38)

RNP APCH - GPS.

NA Rwy 17 helicopter visibility reduction below 1 SM NA.
Baro-VNAV NA. Use Concordia altimeter setting.
Straight-in and Circling Rwy 17 NA at night.

MISSED APPROACH: Climb to 3000 direct OFAGI and hold.

CNK ASOS 123.825	KANSAS CITY CENTER 127.35 257.975	CTAF 122.90
----------------------------	---	-----------------------



CATEGORY	A	B	C	D
LPV DA	1763-1	327 (400-1)		NA
LNAV/VNAV DA	1763-1	327 (400-1)		NA
LNAV MDA	1920-1	484 (500-1)	1920-1 3/8 484 (500-1 3/8)	NA
C CIRCLING	1980-1	543 (600-1)	1980-1 1/2 543 (600-1 1/2)	NA

NC-2, 20 FEB 2025 to 20 MAR 2025

NC-2, 20 FEB 2025 to 20 MAR 2025