


LOC/DME I-UKF 111.55 Chan 52(Y)	APP CRS 007°	Rwy Idg TDZE Apt Elev 6201 1276 1303
----------------------------------------------	------------------------	--------------------------------------------------------------------------

ILS Y or LOC Y RWY 1


WILKES COUNTY (UKF)

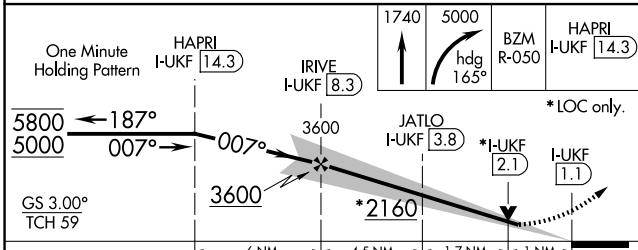
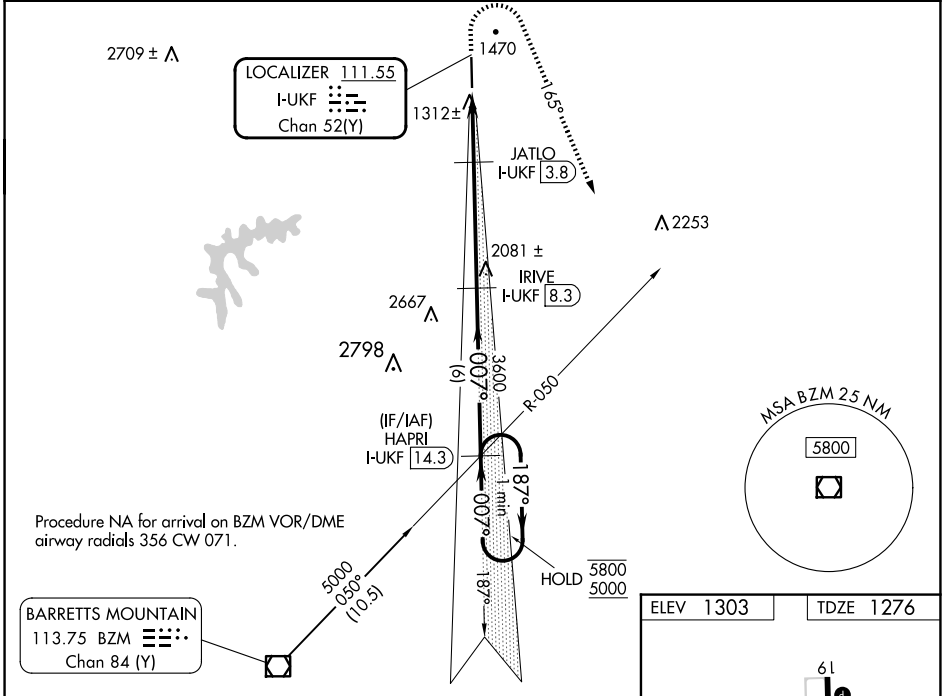
DME required.


⚠ VDP NA when using Hickory altimeter setting. When local altimeter setting not received, use Hickory altimeter setting and increase S-ILS DA to 1569 feet and all MDAs 100 feet, and increase S-LOC Cats C/D visibility $\frac{3}{8}$ SM and Circling Cat C visibility $\frac{1}{2}$ SM. For inop ALS when using Hickory altimeter setting, increase S-ILS all Cats visibility and S-LOC Cat C/D visibility $\frac{3}{8}$ SM.

MALSR 

MISSED APPROACH: Climb to 1740 then climbing right turn to 5000 heading 165° and BZM VOR/DME R-050 direct HAPRI/I-UKF 14.3 DME and hold, continue climb-in-hold to 5000.

AWOS-3 126.625	ATLANTA CENTER 125.15 263.0	UNICOM 122.7 (CTAF) 
--------------------------	---------------------------------------	-----------------------------------------------------------------------------------------------------------------



CATEGORY	A	B	C	D
S-ILS 1	1476- $\frac{1}{2}$		200 (200- $\frac{1}{2}$)	
S-LOC 1	1640- $\frac{1}{2}$	364 (400- $\frac{1}{2}$)	1640- $\frac{5}{8}$	364 (400- $\frac{5}{8}$)
 CIRCLING	1800-1 497 (500-1)	1880-1 577 (600-1)	1880-1 $\frac{1}{2}$ 577 (600- $\frac{1}{2}$)	2240-3 937 (1000-3)


ELEV 1303	TDZE 1276
-----------	-----------


61

6201 X 100

0.9% up

1

REIL Rwy 19 

MIRL Rwy 1-19 

007°

SE-2, 20 FEB 2025 to 20 MAR 2025

SE-2, 20 FEB 2025 to 20 MAR 2025