

WAAS CH 78436 W19A	APP CRS 186°	Rwy Idg TDZE Apt Elev	6201 90 90
--	------------------------	-----------------------------	---------------------------------------

RNAV (GPS) RWY 19

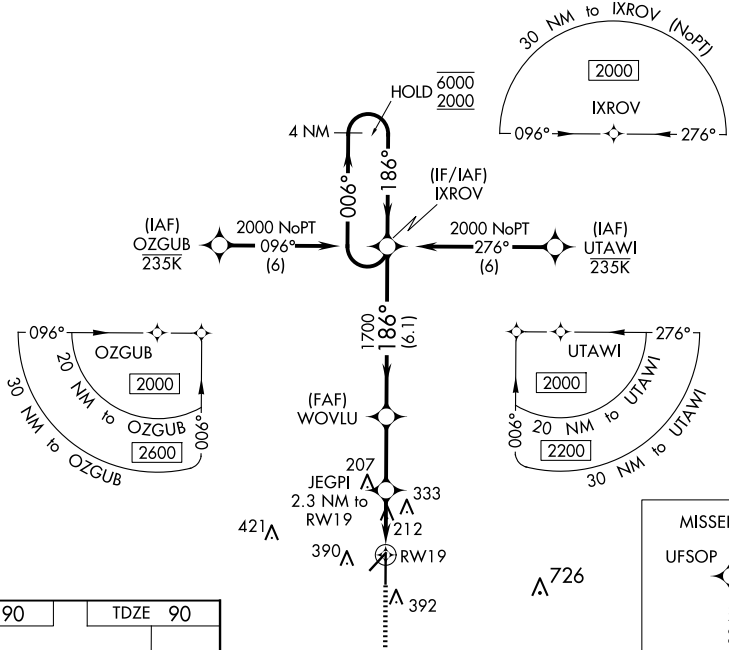
ZEPHYRHILLS MUNI (ZPH)

RNP APCH.

▼ For uncompensated Baro-VNAV systems, LNAV/VNAV NA below -15°C or above 54°C.

MISSED APPROACH: Climb to 2000 direct UFSOP and hold.

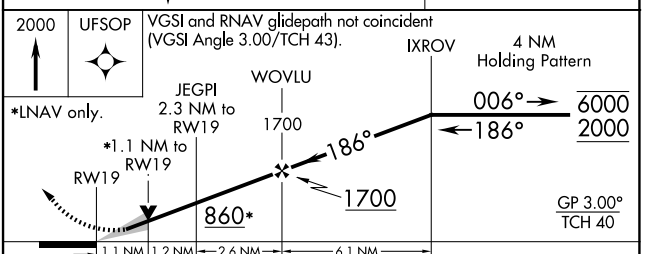
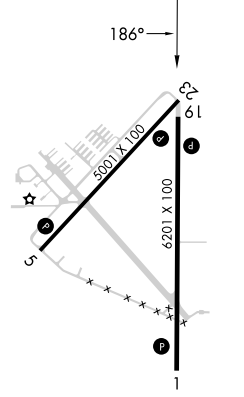
AWOS-3PT 118.975	TAMPA APP CON 119.9 290.3	UNICOM 123.075 (CTAF) 0
----------------------------	-------------------------------------	-----------------------------------



SE-3, 20 FEB 2025 to 20 MAR 2025

SE-3, 20 FEB 2025 to 20 MAR 2025

ELEV 90	TDZE 90
---------	---------



CATEGORY	A	B	C	D
LPV DA		340-7/8	250 (300-7/8)	
LNAV/VNAV DA		380-1	290 (300-1)	
LNAV MDA	480-1	390 (400-1)	480-1 1/8	390 (400-1 1/8)
<input checked="" type="checkbox"/> CIRCLING	740-1	650 (700-1)	740-1 3/4	740-2
			650 (700-1 3/4)	650 (700-2)

- MIRL Rwy 5-23 **0**
- HIRL Rwy 1-19 **0**
- REIL Rws 1 and 19 **0**